



# Beef HerdPlus User Guide

[www.icbf.com](http://www.icbf.com)

AgTech - It's in Our DNA

get connected



This Welcome Pack is aimed at helping you make full use of your HerdPlus membership. The HerdPlus service will provide you with essential breeding and management tools to maximise profitability within your farming enterprise.

For more information on the HerdPlus services, please follow the headings below:

★ € <b>Understanding Euro-stars</b>	3
★ € <b>Genomics</b>	5
★ € <b>Commercial Beef Value (CBV)</b>	6
★ € <b>Dairy Beef Index (DBI)</b>	7
★ € <b>Logging In</b>	7
★ € <b>View Profiles</b>	8
★ € <b>Record Events</b>	11
★ € <b>Reports</b>	14
★ € <b>Applications</b>	16

**To familiarise yourself with the various indexes and genomics, read the first four sections of this brochure.**

## Sean Larkin, Co. Galway

“For myself the HerdPlus service is so convenient. Of course, I would recommend it without a doubt! It shows me where the herd is currently at and paves a path to aim for going forward. I like using the HerdPlus service as all the information is at your

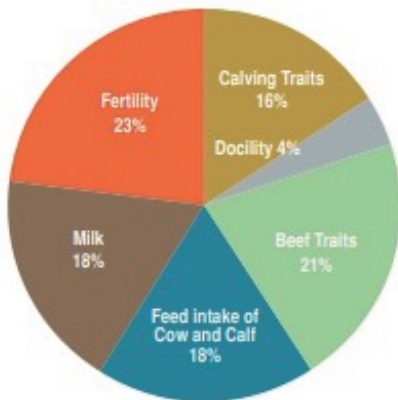
fingertips. The live profiles are very convenient as the information is always up to date when you need it. In my opinion, every farmer should be in HerdPlus and I would recommend it to farmers to put it at the forefront of their breeding decisions.”

## What are Euro-stars?

The Euro-star index is designed to aid in the selection of more profitable breeding animals for the suckler herd. This gives farmers more information to select better males and females to breed for either Replacement or Terminal traits.

The Euro-star Index is made up of two sub-indexes; Replacement and Terminal Index.

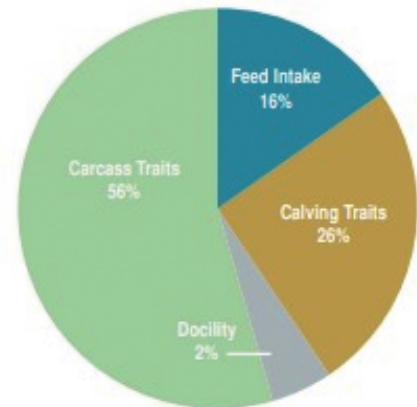
### Replacement Index



The Replacement Index looks at the maternal traits such as milk and fertility, whilst maintaining the traits needed to produce weanlings. Suckler farmers aiming to breed replacement heifers should focus on the Replacement Index.

### Terminal Index

The Terminal Index looks at the beef traits of an animal such as carcass weight and conformation. Farmers wanting to breed animals for slaughter or sale as weanlings should focus on the Terminal Index.



The Euro-star rating system was designed to make it easier for farmers to understand with 1 star animals being in the bottom 20% and 5 star animals being in the top 20%.

Across Breed	Eurostar Rankings	
★★★★★	5 Stars	Index Value is in top 20% of all animals
★★★★	4 Stars	Index Value is in top 40% of all animals
★★★	3 Stars	Average Index Value
★★	2 Stars	Index Value is in bottom 40% of all animals
★	1 Star	Index Value is in bottom 20% of all animals

Farmers should look at the within breed stars and across breed stars combined with the individual traits of importance displayed as a Predicted Transmitting Ability (PTA) figure. Within breed stars rank an animal against other animals of its own breed, while across breed stars rank an animal against all animals across all breeds. It is important to look further into an animal's index or trait PTA, such as carcass weight or daughter calving interval. For example, two animals could be both 5 star, but their trait PTA's within the index could be completely different. Therefore, it is important to breed for particular traits of importance within the index and not just the index as a whole.

## Reliability

This is used to measure the accuracy of an index or trait PTA based on the amount of data that is recorded on an animal. The number of progeny records required to meet certain reliability figures varies from trait to trait as some traits are more heritable than others.

This bull has high reliability

This bull has low reliability

Star Rating (within Angus breeds)	Economic Indexes	Purpose	Euro value	Index reliability (across all beef breeds)	Star Rating (across all beef breeds)
★★★★★	Replacement (per daughter lactation)	To breed future cows for the suckler herd	€139	82% (V High)	★★★★★
★★★★☆	Terminal	To breed beef animals from the suckler herd that are destined for slaughter	€79	92% (V High)	★★★★☆
★★★★★	Dairy Beef	To breed beef animals from the dairy herd that are destined for slaughter	€157	93% (V High)	★★★★★

Calving Difficulty (births requiring considerable assistance; % 3 & 4)			
When Mated With:	Value	Reliability	
Beef Heifers Breed avg: 4.6%, All breeds avg: 8.0%	4.2%	93% (V High)	
Beef Cows Breed avg: 2.0%, All breeds avg: 3.8%	1.5%	93% (V High)	

Star Rating (within Angus breeds)	Key profit traits	Index value	Trait reliability	Star Rating (across all beef breeds)
Expected progeny performance				
★★★★☆	Docility (1-5 scale) Breed avg: 0.01, All breeds avg: 0.02	0.02 scale	96% (V High)	★★★★☆
★★★★☆	Carcass weight (kg) Breed avg: 7.15kg, All breeds avg: 17.50kg	6.6kg	99% (V High)	★★★★☆
★★★★☆	Carcass conformation (1-5 scale) Breed avg: 0.71, All breeds avg: 1.47	0.70 scale	99% (V High)	★★★★☆
Expected daughter breeding performance				
★★★★☆	Daughter calving difficulty (% 3 & 4) Breed avg: 6.74%, All breeds avg: 5.32%	7.47%	77% (High)	★★★★☆
★★★★★	Daughter milk (kg) Breed avg: 6.5kg, All breeds avg: 2.5kg	6.60kg	81% (V High)	★★★★★
★★★★★	Daughter calving interval (days) Breed avg: -4.22 days, All breeds avg: -0.88 days	-7.11days	58% (Average)	★★★★★

Star Rating (within Hereford breeds)	Economic Indexes	Purpose	Euro value	Index reliability (across all beef breeds)	Star Rating (across all beef breeds)
★★★☆☆	Replacement (per daughter lactation)	To breed future cows for the suckler herd	€68	44% (Average)	★★★☆☆
★★★★☆	Terminal	To breed beef animals from the suckler herd that are destined for slaughter	€94	52% (Average)	★★★★☆
★★★★★	Dairy Beef	To breed beef animals from the dairy herd that are destined for slaughter	€140	63% (High)	★★★★★

Calving Difficulty (births requiring considerable assistance; % 3 & 4)			
When Mated With:	Value	Reliability	
Beef Heifers Breed avg: 5.2%, All breeds avg: 8.0%	2.6%	56% (Average)	
Beef Cows Breed avg: 2.74%, All breeds avg: 3.8%	1.5%	73% (High)	

Star Rating (within Hereford breeds)	Key profit traits	Index value	Trait reliability	Star Rating (across all beef breeds)
Expected progeny performance				
★★★☆☆	Docility (1-5 scale) Breed avg: 0.10, All breeds avg: 0.02	0.07 scale	37% (Low)	★★★☆☆
★★★★★	Carcass weight (kg) Breed avg: 5.25kg, All breeds avg: 17.50kg	14.80kg	47% (Average)	★★★★★
★★★★☆	Carcass conformation (1-5 scale) Breed avg: 0.56, All breeds avg: 1.47	0.54 scale	44% (Average)	★★★★☆
Expected daughter breeding performance				
★★★★☆	Daughter calving difficulty (% 3 & 4) Breed avg: 5.88%, All breeds avg: 5.32%	5.34%	59% (Average)	★★★★☆
★★★☆☆	Daughter milk (kg) Breed avg: 3.7kg, All breeds avg: 2.5kg	2.50kg	37% (Low)	★★★☆☆
★★★☆☆	Daughter calving interval (days) Breed avg: -3.78 days, All breeds avg: -0.88 days	-2.53days	37% (Low)	★★★☆☆

## Why does my animal not have a Euro-star rating?

The most common reason for a Euro-star rating not to be displayed on an animal is generally because the sire may not be recorded. You can record this through **Record Events > Missing Sire**

## Why do Euro-stars change?

This is due to the amount of new information that is being received on old and new animals. Therefore, stars are moving with the improvement of animals.

## What is Genomics?

Genomics is breeding using DNA (Genotype) combined with performance data on an animal and its relatives to help better predict how well an animal will perform in the future. DNA is passed from parents to offspring and is therefore central to breeding. It can be extracted from tissue, hair follicles, blood or semen samples. DNA is the building block of life and in combination with management such as feeding, can determine the performance of an animal such as how much milk it will yield, its susceptibility to disease and its fertility performance.

## What are the Benefits of Genomics?

Genotyping an animal and having access to its genomic results has huge benefits for the herdowner.

- **Higher Euro-star index reliability** – Greatly increases index reliability before the animal has any of its own progeny.
- **Parentage verification** – Genotyping can confirm the sire & dam of an animal.
- **Major genes** – Animals can be identified as carriers of major genes (i.e. Myostatin, polledness, etc.) and genetic diseases.
- **Full traceability** – Ensures traceability of every meat sample back to the animal it originated from.

Genotypes can be ordered online by logging into HerdPlus through the Genomic Services portal or by calling 023 8820452.

Hair cards will be sent to farm via post with instructions and a return envelope enclosed.

Enter herd number or animal tag number and click "Go" to track genotyping progress

This is the date that ICBF received the genotype from the lab. Animal will be ran through the genomic evaluation process shortly afterwards

This updates regularly so you can see what stage the sample is currently at

### Genotype Tracking Help

Search for samples by herd number, animal number or Batch number

OR

Search for samples requested by date of initial request between two dates: Start Date End Date Go

Showing 1 to 92 of 92 entries Show filters | Excel | PDF | Print

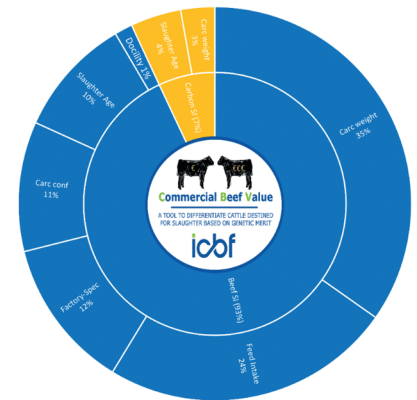
Request Date	Herd	Owner	Animal Number	Sex	Breed	Death Date	Sample	Org	Sent to Farm	ICBF Received	Sent to Lab	Chip	Geno Received	Prio	Code	Animal Search	Status	Date of Status	Cert Requested
27-MAY-22				F	BB		HAIR	FA	30-MAY-22	15-JUN-22	15-JUN-22	IDBVS	12-JUL-22	4	BDGP22	<a href="#">View</a>	SIRE & DAM VERIFIED	13-JUL-22	
27-MAY-22				F	LM	15-NOV-22	HAIR	FA	30-MAY-22	15-JUN-22	15-JUN-22	IDBVS	12-JUL-22	4	BDGP22	<a href="#">View</a>	SIRE & DAM VERIFIED	13-JUL-22	
27-MAY-22				F	BB	13-JUN-23	HAIR	FA	30-MAY-22	15-JUN-22	15-JUN-22	IDBVS	12-JUL-22	4	BDGP22	<a href="#">View</a>	SIRE & DAM VERIFIED	13-JUL-22	
16-MAR-22				F	BB		EARTAG	FA	14-APR-22			IDB19K		4	BDGP22	<a href="#">View</a>	CLOSED	27-MAY-22	
16-MAR-22				F	BB		EARTAG	FA	14-APR-22	02-JUN-22	02-JUN-22	IDBVS	23-JUN-22	4	BDGP22	<a href="#">View</a>	SIRE & DAM VERIFIED	24-JUN-22	
16-MAR-22				F	LM	28-JUN-22	EARTAG	FA	14-APR-22	02-JUN-22	02-JUN-22	IDBVS	23-JUN-22	4	BDGP22	<a href="#">View</a>	SIRE & DAM VERIFIED	24-JUN-22	
16-MAR-22				F	SI	07-OCT-22	EARTAG	FA	14-APR-22	02-JUN-22	02-JUN-22	IDBVS	01-JUL-22	5	BDGP22	<a href="#">View</a>	GENOMIC EVALUATION	01-JUL-22	

## What is CBV?

The Commercial Beef Value (CBV) is a tool for non-breeding beef farmers designed to give an insight into an animal's genetic merit for beef traits. Like the Replacement and Terminal Indexes, the CBV is expressed as a € value. The beef genetic merit of an animal with a higher CBV € value will be superior.

The animals that will receive CBVs are sucklers, dairy x beef and dairy x dairy. Calved females, dairy females and pedigree beef males & females will not receive a CBV.

CBV is comprised of five traits from the Terminal Index that are important to non-breeding beef enterprises:



## CBV in action

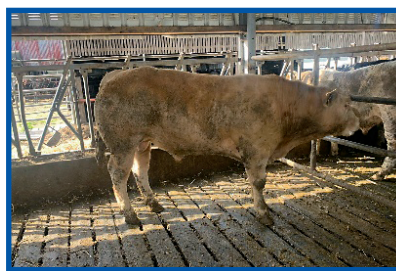
When trading beef animals, farmers are generally reliant on a liveweight and their own visual assessment of an animal to make a decision on its value. These can be good indicators of an animal's genetic potential, but may not give the complete picture. As the example below demonstrates, there can often be instances of animals with similar liveweights and visual appearances but with significant differences in their genetic merit. Table 1 contains details of two young bulls on Tullamore Farm that are similar in appearance and liveweight but with very different CBVs.

Tag	Breed	CBV	Age Slaughter	Carcass Weight	Conf	Fat	Price
455	CH x LM	€310	15.6	444	U=	2=	€2,398
433	CH x HE	€240	15.5	380	R=	3=	€2,204

**Table 1.** Details of two young bulls (below) on Tullamore Farm.



455



433

In this instance, animal number 455 has a much higher CBV due to its superior genetics. This resulted in a better kill out and overall price, but also a potential saving on feed costs as feed intake is a trait that is factored into the CBV.

## Summary

Whether it be dairy male calves at 3 weeks old, or continental suckler steers at 18 months old, having genetic information to hand when making sale or purchasing decisions is vital for farmers. The analysis has shown that the CBV is predicting animals that ultimately have higher carcass performance. This allows farmers to incorporate the CBV into their sale or purchasing decisions with confidence.

1. Carcass weight
2. Carcass conformation
3. Carcass fat
4. Docility
5. Feed intake

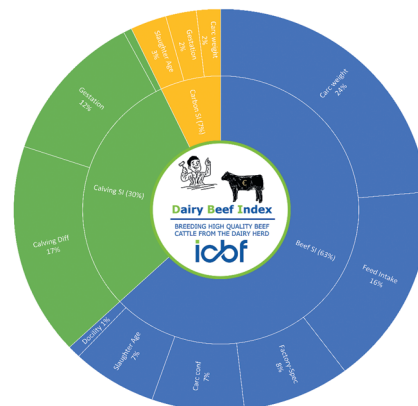
Calving traits are not included in the CBV as they are not applicable to farmers purchasing these animals.

## Understanding the Dairy Beef Index

The DBI index is a tool to produce quality beef cattle from the dairy herd that hold both desirable calving attributes for dairy animals (i.e. easy calving) and valuable carcass attributes for beef finishing. It does this by ranking beef cattle for use in the dairy herd based on their genetic merit for several traits of importance to dairy-beef production systems.

### What does the DBI select for?

- Easy calving, short gestation and lower calf mortality.
- Better conformation and lower fat score carcasses.
- Polledness, carbon efficiency and lower feed intake values.



## Advice for beef breeders

Use the DBI to identify breeding males and females to produce beef bulls for the dairy herd. The DBI of each animal in your herd can be viewed under the Euro-star profile or on the ICBF Animal Search.

Replacement/Terminal  Dairy Beef

Euro-star Index Replacement Graphics Terminal Graphics Calving Linear Type TB And Liver Fluke MEQ Ancestry Evaluation History Index Comparison

Star Rating (within Limousin breed)	Economic Indexes	Purpose	€uro value	Index reliability	Star Rating (across all beef breeds)
★★★★★	<a href="#">Replacement</a> (per daughter lactation)	To breed future cows for the suckler herd	€128	58% (Average)	★★★★★
★★★☆☆	<a href="#">Terminal</a>	To breed beef animals from the suckler herd that are destined for slaughter	€128	72% (High)	★★★☆☆
★★★★☆	<a href="#">Dairy Beef</a>	To breed beef animals from the dairy herd that are destined for slaughter	€119	65% (High)	★★★★★

Click the toggle to view more information on the DBI of an animal including calving sub-index and beef sub-index

## Logging In

Follow the steps below to access your HerdPlus account:

1. Go to [www.icbf.com](http://www.icbf.com)
2. Click Log In
3. Enter your herd number and password in the fields provided
4. Click Log In
5. Click here to retrieve your password OR Text the word PASS to 0894577663 from the mobile registered to your herd to receive a temporary password.

Username

**Herd Number**

Password

**Password**

Show Password

**LOG IN**

[Forgot your password?](#)

## Beef Euro-star Profile

View the current Euro-star ratings for each of your animals on the live Euro-star profile.

Compare your herds average Replacement Index against the National Average.

Download and print this profile in **Excel** or **PDF** format.

**Filter** your list to fit your search criteria (i.e. age).

Click on a column heading to **sort** your list.

Click on the full tag number to view more information including Fertility, Progeny and Genomic Evaluation

**Beef Euro-Star Profile** All animals that have a Euro Star Index. Additional Breeding Values are available in the Excel file.

May 2023 Evaluation

**€114**  
Herd Replacement Index (Cows)  
★★★★★

3 (kg) ★★★★★  
Carcass Wgt

14.6 (kg) ★★★★★  
Daught Milk

-0.39 (days) ★★★★★  
Daught Calv Int

0.06 ★★★★★  
Docility

Herd Replacement Index Pattern

Showing 1 to 51 of 51 entries

Hide filters | Excel | PDF | Print

Animal Details							Replacement Index			Terminal Index			Dairy Beef Index				
Jumbo	Animal Number	Breed	Birth Date	Sex	Calvings	Dam	Sire	Genomic Eval	Index €	Euro-Star Within Breed	Euro-Star Across Breed	Index €	Euro-Star Within Breed	Euro-Star Across Breed	Index €	Euro-Star Within Breed	Euro-Star Across Breed
551		LM (50%) AA (25%)	28-DEC-22	F	0	IE141211280865	IE141240950541	No	92		★★★★★						

## CBV Profile

View the CBV € value for each of your eligible animals.

Compare your animals on the star ranking across breed or within breed type.

A figure in black is more desirable for a particular trait. This may be a positive or negative figure depending on the specific trait.

Jumbo	Animal Number	Breed	Birth Date	Sex	Dam	Sire	Genomic Eval	Sire Verified	Breed Type	Value €	Star Ranking (Across Breed)	Star Ranking (Within Breed Type)	Carcass Weight (kg)	Carcass Conformation (1-15 scale)	Carcass Fat (1-15 scale)	Age at Slaughter (days)	Feed Intake (kg DM/day)	Docility (1-5 scale)
		HO (66%), FR (25%)	22-FEB-22	M			N	N	Dairy x Dairy	-2	★★★★★	★★★★★	-3.7	-0.53	-0.11	2	0.12	0
		LM (50%), AA (25%)	12-MAY-23	M			N	N	Suckler	260	★★★★★	★★★★★	21.9	0.92	0.01	-7	-0.02	0.04

Animals with good carcass traits, docility and feed intake values will have the highest CBVs. These traits can be assessed in the Euro-star Terminal Index of your breeding animals. Higher € values for these traits in the Euro-star indexes will result in higher progeny CBVs.



## Beef Finishing Profile (New)

View the finishing performance at both herd level and on an individual animal basis.

Download and print this profile in **Excel** or **PDF** format.

Key Performance Indicators (KPI's) can also be monitored through this profile.

This interactive profile enables you to filter by;

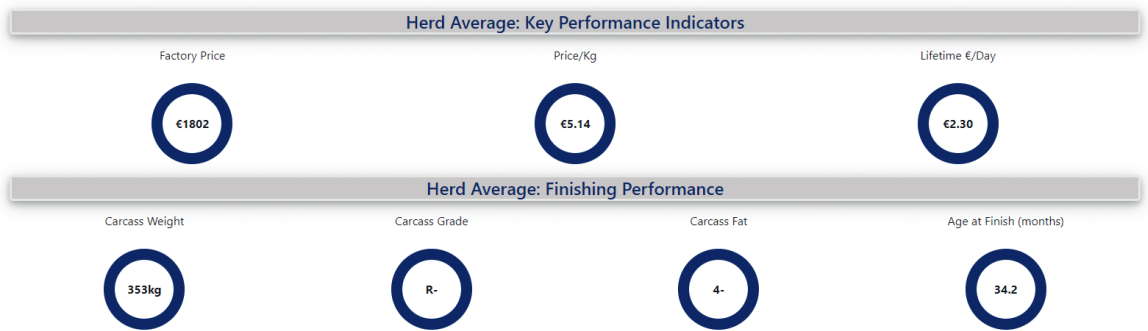
- Finishing period.
- Animal Type – Heifers, steers, bulls, etc.
- Breed Type – Suckler, Dairy x Dairy or Dairy x Beef.
- Origin – Homebred or purchased.

### Beef Finishing Profile

Defaults to show all animals finished in the last 12 months from today's date. Use the filters to refine your search. The profile & herd average figures will update based on your selections.

Date From:   
 Date To:

Animal Type:   
 Breed Type:   
 Origin:



Showing 1 to 100 of 196 entries

Tag	Date of Birth	Sex	Breed	Breed Type	CBV €	CBV * (within breed type)	Origin	Days on Farm	Date Finished	Age at Finish (months)	Factory	Animal Type	Weight (kgs)	Grade	Fat	Price/Kg (€)	Factory Price (€)	Life Time €/day
	11-APR-21	F	LM	Suckler			Purchased	341	24-JAN-23	21.4		Heifer	334	R+	3+	5.70		2.92
	21-MAR-21	M	AA	Suckler			Homebred	624	05-DEC-22	20.5		Steer	486	R+	4+	5.02		3.91
	23-MAR-21	M	AA	Suckler			Homebred	590	03-NOV-22	19.4		Ybull	382	R-	3=	4.80		3.11

## Expected Calving Profile

See the expected calving dates for your herd based on insemination data recorded and the predicted Euro-star value of the calf in both the Replacement and Terminal Indexes.

### Expected Beef Calving Profile

Excluded Females

Showing 1 to 6 of 6 entries

Jumbo	Lact	Last Serve	Last Bull	Bull's Main Breed	Beef Heifer OR Cow CD%	Sexed	Last Preg Scan	Exp Calving Date	Days To Calving	Expected Progeny Replacement Index €	Expected Progeny Terminal Index €	Expected CBV €
1348	2	29-OCT-22	AA4088	AA	2.1			08-AUG-23	8	92	73	201
356	0	11-FEB-23	AA7485	AA	3.8			21-NOV-23	113	122	102	254
311	3	19-FEB-23	AA7485	AA	1.7			29-NOV-23	121	146	99	244

## Genomics Profile

View the genomic status of the herd to date.  
Identify the genotype status of an animal in the herd.  
Monitor the status of the animals genotyped (i.e. "sent to farmer", "genomic evaluation", etc.)

Click here to view Major genes and more information including; Call rate and Chip type.

Jumbo	Animal Number	DOB	Sex	Breed	Name	Sire	Sample Received	Genotype Received	Major Genes	Status	Genomic Eval.
285		28-NOV-18	F	LM (50%), HO (22%)		ZGM	Yes	Yes	View	GENOMIC EVALUATION	Yes
364		22-JAN-19	F	LM (100%)		ZAG	Yes	Yes	View	GENOMIC EVALUATION	Yes

This information may be of use to pedigree breeders.

Show 10 rows. Showing 1 to 10 of 10 entries

First Previous 1 Next Last Hide filters Excel PDF Print

Major Gene	Type	Code	Quality Check	Result
Myostatin C313Y	Meat	MYO_C313Y	PASS	NO COPY
Myostatin D182N	Meat	MYO_D182N	PASS	NO COPY
Myostatin E226X	Meat	MYO_E226X	FAIL	NO RESULT
Myostatin F94L	Meat	MYO_F94L	PASS	SINGLE COPY
Myostatin L64P	Meat	MYO_L64P	PASS	NO COPY
Myostatin NT419	Meat	MYO_NT419	PASS	NO COPY
Myostatin NT821DEL11	Meat	MYO_NT821	PASS	NO COPY
Polled Celtic	Beneficial	POLL_C	PASS	NO COPY
Myostatin Q204X	Meat	MYO_Q204X	PASS	NO COPY
Myostatin S105C	Meat	MYO_S105C	PASS	NO COPY

## Stock Reports

View reports based on the stock numbers in your herd.

Download and print these reports in **Excel** or **PDF** format.

Report:  Year:  Sex:

- Select Report
- Stock Report
- Stock Reconciliation Report
- Nitrates Report
- Teagasc Dairy Profit Monitor Monthly Livestock
- Teagasc Drystock Profit Monitor Monthly Livestock
- Teagasc Dairy Profit Monitor: Livestock Transfers

### Stock Nitrates Report

– Calculates kgs of Nitrogen (N) and Phosphorus (P) produced based on the number of animals in the herd.

### Stock Report

– Calculates the number of animals in the herd on the last day of each month broken down by animal category.

### Stock Reconciliation Report

– Calculates the number of animals **Born, Bought, Sold, Died and livestock totals for each month.**

Stock reports are beneficial for accounting purposes.

## Data Recording

Recording data on your animals is vitally important to ensure the most accurate Euro-star figures are available for your herd. Dissecting this information from reports and profiles helps to make more informed breeding decisions for your farming enterprise.

## Record Heat & AI/Serve

Here you can record heat and serve events for the animals in your herd. This is a great way to keep track of fertility records for your herd and individual animals. These will impact important KPI's such as calving interval, etc.

Enter the date of service here

Enter the tag number or AI code of the sire used

**Record Heat and Serve Events** To record an in-heat event, only enter the date; for serves, the bull and treatment are required Help

Showing 1 to 75 of 75 entries Hide filters | Excel | PDF | Print

Jumbo	Animal Number	From To	From Date To Date	Purpose	From Date To Date	Last Bull	From To	Date	Bull Used	Sire Check	Sexed
6		1	08-SEP-22	Beef	04-JAN-23	LM8816	1				Not Sexed
8		1	29-OCT-22	Beef	10-JAN-23	BB6634	1				Not Sexed
15		2	24-FEB-23	Beef							Not Sexed
16		2	07-OCT-22	Beef							Not Sexed
57		9	18-APR-23	Beef							Not Sexed
67		5	06-JAN-23	Beef	02-MAR-23	CH8262	2				Not Sexed

## Record Calving Ease

Recording accurate calving surveys for the animals in your herd is valuable as it is reflected in the calving difficulty figure of sires and increases their reliability for calving difficulty. Calving ease and other information can be recorded in the **Record Birth Events screen**.

**Record Calving Ease** Enter calving survey information for the following animals Un-do Changes | Help

2023 born beef animals listed. Select Animal Type:  Select Year:

Showing 1 to 2 of 2 entries Hide filters | Excel | PDF | Print

Animal Number	Sex	From Date To Date	Dam Number	Calving Ease
	F	23-MAR-23		<input type="button" value="1: Normal Calving"/> <input type="button" value="2: Some Assistance"/> <input type="button" value="3: Considerable Difficulty"/> <input type="button" value="4: Vet Assistance"/>
	M	01-APR-23		<input type="button" value="1: Normal Calving"/> <input type="button" value="2: Some Assistance"/> <input type="button" value="3: Considerable Difficulty"/> <input type="button" value="4: Vet Assistance"/>

Showing 1 to 2 of 2 entries

## Record Live Weight

Recording live weights of animals in your herd will help you to identify the best performing animals. Weaning weights at 150-250 days play a crucial part in the daughter milk trait within the €uro-star Replacement Index.

Record weights for animals currently in the herd or animals that have left the herd within the previous year

Enter the date of weighing here

Enter the weight of each animal here

**Record Animal Weight** Record live weights for animals in your herd, and for those that have recently left. Help

Date of Weighing:

Showing 1 to 124 of 124 entries Hide filters | Excel | PDF | Print

Jumbo	Animal Number	Sex	From Date	To Date	Purpose	Breed	From Date	From	To	Weight
Jumbo	Animal Number	Sex	Date of Birth		Purpose	Breed	Last Weighing Date	Last Weight	Weight	
6		F	10-MAR-20		Beef	LM (88%), SH (9%)				<input type="text"/>
8		F	26-JUN-19		Beef	CH (56%), LM (25%)	29-APR-23	722		<input type="text"/>
15		F	05-MAR-19		Beef	LM (50%), AA (13%)	10-OCT-22	678		<input type="text"/>

## Record Missing Sire

Recording the sire of a calf is optional at birth. However, without a sire or a genotype on the database, ICBF cannot generate a €uro-star index for that animal. All animals in the herd with no sire recorded will appear on this screen.

Select to view animals currently in the herd or historically and click Go

Enter the full tag number or AI code of the sire

Click here if the sire of the animal is not known

**Record Missing Sire** Record the sire of the animals below, or mark them as unknown. Un-do Changes | Help

Animals currently in your herd are listed. Select Animal Type:

Showing 1 to 9 of 9 entries Hide filters | Excel | PDF | Print

Animal Number	Sex	Date of Birth	Purp	Breed	Dam	Previous Error	Sire	
	F	18-APR-23	Beef	AA (44%), HO (34%)			72214474420671	<input type="button" value="Unknown Sire"/>
	M	14-SEP-22	Beef	LM (50%), BB (13%)			<input type="text"/>	<input type="button" value="Unknown Sire"/>
	F	10-MAY-21	Beef	SH (66%), CH (25%)			SH4209	<input type="button" value="Unknown Sire"/>
	F	28-APR-21	Beef	CH (56%), LM (31%)			<input type="text"/>	<input type="button" value="Unknown Sire"/>

## Record Pregnancy Diagnosis

By recording scanning results, expected calving dates will be generated for your herd. In the case that there are no serves recorded, farmers can record estimated number of days in calf as communicated by the scanning technician.

Enter the date of scanning here

Select one of the following options: EMPTY, IN CALF or TWINS

### Record Pregnancy Diagnosis

[Help](#)

Please enter scan date here:

Showing 1 to 76 of 76 entries Hide filters

FB Jumbo	Animal Number	Lact	Last Calved	Last Serve	Purpose	Last Bull	Days last serve	Num Serves	Status	Preg Checked	Days in calf	Serve bull	Sire checked
254		7	10-AUG-22	29-OCT-22	Beef	AA7485	237	1	In Calf	Select			
447		6	12-AUG-22	11-DEC-22	Beef		194	2	In Calf	Select			
451		6	18-SEP-22	16-NOV-22	Beef	AA7485	219	1	In Calf	Select			
686		0			Beef			0	Not Served	Select			

## Suckler Carbon Efficiency Programme (SCEP)

For SCEP participants, survey data recording for both calves and dams can be recorded by logging into ICBF. This can be accessed by going to **Services** > **SCEP**. Weighing and genotype information in relation to the scheme can also be accessed through this screen.

### Suckler Carbon Efficiency Programme

#### Calf Information

- Record Sire
- Record Calving Ease
- Record Birth Size
- Record Vigour
- For calves 5 months of age and older:
- Record Docility
- Record Quality

#### Dam Information

- Record Dam Docility
- Record Milk Ability
- Record Mothering Ability
- Record Feet and Legs
- Record Udder Score
- Record Teat Score
- Record Departure Reasons

#### Genotype Information

- Self-Selections
- View Genotype Details
- Genomic Herd Profile
- Change Tag Supplier

Mullinahone. Set on 12-MAY-23

#### Weighing Information

- Record Calf and Dam Weights
- View/Register Owned Scales
- View/Register Third Party Scales
- Use Weighing Scales Rental Service

#### Last Scales Linked To Your Herd

Reg No:	
Start Date:	
End Date:	

#### Herd Summary

Scep Herd Progress

Requirements: Sires, Calving Ease, Birth Size, Calf Vigour, Calf Docility, Calf Quality, Dam Docility, Dam Milkability, Dam Mothering, Dam Feet and Legs, Dam Udder, Dam Teat, Weighing(IC testing)

% Available Requirements Completed: 0, 20, 40, 60, 80, 100

### Herd Details

Showing 1 to 14 of 14 entries Hide filters [Excel](#)

Calf Tag	Sex	Birth Date	Death Date	Dam	Sire	Calving Ease	Birth Size	Vigour	Docility	Quality
	F	14-APR-23				1			Too Young	Too Young
	F	14-APR-23				1			Too Young	Too Young
	F	14-APR-23				1			Too Young	Too Young
	M	14-APR-23				1			Too Young	Too Young
	M	15-APR-23				1			Too Young	Too Young
	M	16-APR-23				1			Too Young	Too Young

## Beef Euro-star Report

The Beef Euro-star Report details the breeding potential of your stock with the aim to breed from the most profitable animals in your herd.

See full breakdown of your herds Euro-star indexes.

Animal Details			Replacement Index					
Jumbo	Animal Tag	Sire ID	Calvings	Index Value (€)	Rel %	Carcass Weight (Kg)	Daught. Milk (Kg)	Daught. Calving Interval (Days)
Date Of Birth	Dam Tag	Across Breed Stars			Herd Rank			
300	26-JAN-2018 AA(50%),SA(25%)	ZLL	4	€199 ★★★★★	58% 7	+24 ★★★★	+9.6 ★★★★★	-2.69 ★★★★★

How does your herd compare with the National Average & National Top 10%?



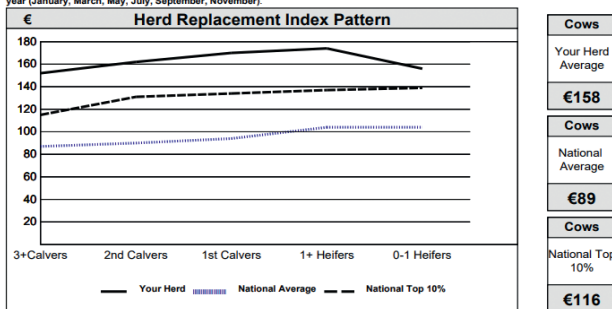
### Euro-Star Report Female Summary Section



Report Date: (Jul 2023 Evaluation)  
Herd Owner:  
Herd Number:

Snapshot of your herd based on the 02-AUG-23

A. The data contained in this report is based on the Jul 2023 Evaluation. ICBF re-evaluates Beef Euro-Star values 6 times a year (January, March, May, July, September, November).



B. The Star rating cut-offs, in brackets below, are based on the Jul 2023 Evaluation. These may change in subsequent evaluations.

Cows	Your Herd Average	€158
Cows	National Average	€89
Cows	National Top 10%	€116

Compare your top & bottom cows in the herd based on their Replacement Index.

A. Top Cows						Replacement Index	
Cows in your herd with the Highest Replacement Index							
Jumbo	Tag	Date of Birth	Breed	No. of Calvings	Index Value (€)	Across Breed	
380		27-JAN-21	LM(63%),SA(25%)	1	241	★★★★★	
285		23-FEB-17	SA(50%),SI(25%)	5	219	★★★★★	
260		12-JAN-16	SA(50%),SI(25%)	6	203	★★★★★	
325		06-FEB-19	SI(63%),SA(25%)	3	201	★★★★★	
300		26-JAN-18	AA(50%),SA(25%)	4	199	★★★★★	
351		24-JAN-20	AA(50%),SA(25%)	2	187	★★★★★	
354		01-FEB-20	SI(56%),AA(25%)	2	178	★★★★★	
205		31-JAN-13	SI(50%),LM(44%)	9	176	★★★★★	
389		04-FEB-21	SA(50%),LM(31%)	1	175	★★★★★	
374		02-AUG-20	SI(69%),AA(25%)	1	170	★★★★★	

Jumbo	Tag	Date of Birth	Breed	No. of Calvings	Index Value (€)	Across Breed	
292		23-AUG-17	SI(75%),LM(25%)	4	91	★★★	
244BI		16-JAN-15	LM(50%),CH(34%)	7	95	★★★	
291		10-AUG-17	AA(50%),SI(38%)	4	101	★★★★	
318		09-SEP-18	SI(75%),LM(25%)	3	103	★★★★	
377		05-AUG-20	AA(50%),SI(38%)	1	117	★★★★	
275		25-SEP-16	SA(50%),LM(31%)	5	124	★★★★★	
294BI		24-DEC-17	SA(50%),SI(44%)	4	135	★★★★★	
339		08-APR-19	SI(100%)	2	144	★★★★★	
330		20-FEB-19	AA(50%),SI(31%)	3	145	★★★★★	
319		12-SEP-18	SI(88%),LM(13%)	3	147	★★★★★	

## Weaning Performance Report

This report will allow you to analyse the performance of suckler calves born in your herd, as well as the performance of your suckler cows. Easily identify your most efficient cows.

How do your animals compare to industry targets?

Calf Details				Cow Details		
Tag	Sire	200 Day Weight (kg)	Recorded Wgt (kg)	Jumbo Rep Index Stars Across	Recorded Wgt (kg) Adjusted Wgt (kg)**	Weaning Efficiency
90425	FSZ	397	375 186 1.71*	277BI €167 ★★★★★	748 746	53%

Cow performance

	Calved in Period	No. Weighed*	Avg. Weight (kg)	Weaning Efficiency (Calf 200 Day Weight as % of Cow Weight)	
				Your Herd	Target
All	30	29	727	41%	42%
1st Calvers	7	7	659	44%	42%
2nd Calvers	5	5	712	38%	42%
3rd + Calvers	18	17	760	41%	42%

## Suckler Cow Report

The Suckler Cow Report enables farmers to critically analyse the performance of every suckler cow in their herd.

Clearly identify every aspect of your cows' performance by looking at:

1. Ancestry
2. Fertility
3. €uro-star index

Click "Download Report" to receive the most up to date report on your suckler cows

Suckler Cow Report

[Download Report](#)

Note: You can re-run this report as often as you wish. It will generally take 1-2 minutes to run.

Animal Details		€uro-Star Index				Ancestry Details	
Jumbo:	205	Within Breed	Economic Indexes	Index	Rel%	Across Breed	Sire's Sire
Official Tag:		Replacement	€176	71%	★★★★★		HILLCREST CHAMPION
Animal Name:		Weight					Sire's Dam
Date of Birth:	31-Jan-2013 10y 6m	Birth Weight	Weaning Weight	Mature Weight			COA
Breed:	SI (56%), LM (44%)	43 kg	(217 days-1.48 ADG)*	930 kg			CURAHEEN VIO (ET)
		Fertility					Sire
		Age First Calving	Avg Calv. Interval	Due to Calve			EPN
		23 Months	366 days	09-FEB-24 (BB6634)			EPSON
		Cow Scores					Dam's Sire
Year	2017	2018	2019	2020	2021	2022	Dam's Dam
Cow Milk	G	G	G	VG	VG	G	
Cow Docility	VG	G	G	G	G	G	

Progeny Details																		
Calving Details				Sire Details		Weaning Performance				Carcass Performance								
Calving Date	Calving Interval	Calf Tag	Sex	Calving Survey	Birth Weight	Gest Length	Current Status	Sire Sire	Sire Breed	Weight (kg)	Age (days)	A.D.G. (kg)	Mart Price/kg	Calf Quality	Calf Docility	Age at Slaught. (months)	Carcass Conform & Fat	Carcass Weight (kg)
1 12-Jan-15		90240	M	Difficult	46	285	Dead	ZLA	SA	285	172	1.39*		Good	Good	15	U=3-	426
2 12-Jan-16	365	40260	F	Normal	38	277	In herd	RIO	SA	283	193	1.27*		Good	Good			
3 23-Feb-17	408	10285	F	Normal	41	289	In herd	SA2153	SA	284	214	1.14*		Average	Average			
4 18-Feb-18	360	70308	M	Normal	49	287	Dead	SA2153	SA	287	174	1.37*		Good	Good	16	U=2+	407
5 29-Jan-19	345	50322	M	Normal	47	291	Dead	SH4376	SH	369	238	1.36*		Good	Good	16	R+3-	405
6 19-Mar-20	415	90367	M	Normal	52	289	Dead	ALJ4683	AU	353	185	1.63*		Very Good	Good	15	U+2+	504
7 25-Feb-21	343	80399	M	Normal	51	286	Dead	HE4344	HE	392	219	1.56*		Very Good	Good	16	U=3-	443
8 30-Jan-22	339	10418	M	Normal	39	279	Dead	AA4315	AA	284	196	1.25*		Good	Good	16	U=3-	427
9 30-Jan-23	365	60455	F	Normal	54	287	In herd	S2163	CH	221	111	1.51*						

## Beef Output Report

Assess the productivity of your beef herd in terms of Kgs of liveweight produced with the Beef Output Report.

A useful benchmark for both dry stock and breeding herds.

To assess the output per hectare of your herd, please record "Total Hectares" for your farm as accurately as possible.

See a detailed breakdown of your sales and purchases for the year.

### 1. Summary Data

Report calculates how much liveweight was produced in the herd in 2022. It then breaks this figure down into KPI's which are detailed in section 2 below. All weights are liveweights.

#### A. Total Beef Output (kg)

Sales - Purchases +/- Inventory Change 2022. **9,876**

#### B. Total Livestock Units (LU)

Average livestock units in the herd 2022. **27.1**

#### C. Total Hectares (Ha)

Total hectares available to the cattle enterprise 2022. **22**

### 2. Key Performance Indicators (KPI's)

	Bottom 1/3	Average	Top 1/3
<b>A. Beef Output per Livestock Unit</b> Your Herd <b>364 kg</b> Total beef output (9,876) / Total livestock units (27.1)	276 kg		338 kg
National Average			
<b>B. Beef Output per Hectare</b> Your Herd <b>449 kg</b> Total beef output (9,876) / Total Hectares (22)	298 kg		510 kg
National Average			
<b>C. Stocking Rate per Hectare</b> Your Herd <b>1.23 LU</b> Total Livestock units (27.1) / Total Hectares (22)	1.05 LU		1.6 LU
National Average			

## Beef Calving Report

The Beef Calving Report allows you to assess the calving performance of your herd.

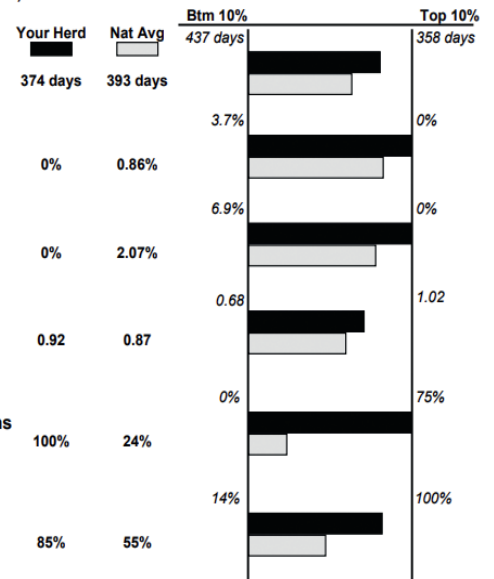
Benchmark your herd for KPI's such as calving interval and number of calves per cow per year.

Compare your herds performance with the National Average.

Quickly identify cows that may have potential fertility issues by looking at your "Action List".

### (b). Top 6 Key Performance Indicators (KPIs)

KPI	Your Herd	Nat Avg
<b>1. Calving Interval (days)</b> <small>Average number of days between successive calvings for cows calved during the period.</small>	374 days	393 days
<b>2. Mortality - Dead at Birth (%)</b> <small>Number of calves born dead (0) as a proportion of all births during the period. (16)</small>	0%	0.86%
<b>3. Mortality - Dead at 28 Days (%)</b> <small>Number of calves born dead or dead within 28 days, (0) as a proportion of all births recorded during the period. (16)</small>	0%	2.07%
<b>4. Calves per Cow per Year<sup>3</sup></b> <small>Number of calves per cow per year, expressed as a proportion of all eligible females in the herd. (17)</small>	0.92	0.87
<b>5. % of Heifers Calved 22-26 Months of Age</b> <small>The number of heifers calved in the period (3) that were between 22 and 26 months of age. (3)</small>	100%	24%
<b>6. Spring 6 Week Calving Rate</b> <small>Number of cows calved within the first 6 weeks, as a proportion of (11) all cows calved during the Spring. (13)</small>	85%	55%



Animal Details					Areas for Attention			
Jumbo	Animal Number	Age	No. of Calvings	Last Calving Date	Last Calving Interval >390 days <sup>1</sup>	Cows Not Calved >390 days <sup>2</sup>	Recycled <sup>3</sup>	Last Calving Scored Difficult <sup>4</sup> (3 or 4)
867		8y 2m	3	17-Sep-20	505	X	X	

## Applications

### Stock Bull Finder

This allows a farmer to search for beef bulls for sale in Ireland from performance recorded pedigree herds.

**You can filter for what traits you are looking for in the bull**

**The Bull Finder allows you to search for bulls in Replacement, Terminal or Dairy Beef Index**

**Replacement Index**  
To breed future cows for the suckler herd

**Terminal Index**  
To breed beef animals from the suckler herd that are destined for slaughter

**Dairy Beef Index**  
To breed beef animals from the dairy herd that are destined for slaughter

(An animal may be unavailable if it has moved between herds within the last day)



## Animal Search

Search an animal's tag number or name to retrieve Euro-star index information.

This can be accessed by downloading the ICBF Animal Search App or on your PC.

**ICBF ANIMAL SEARCH**

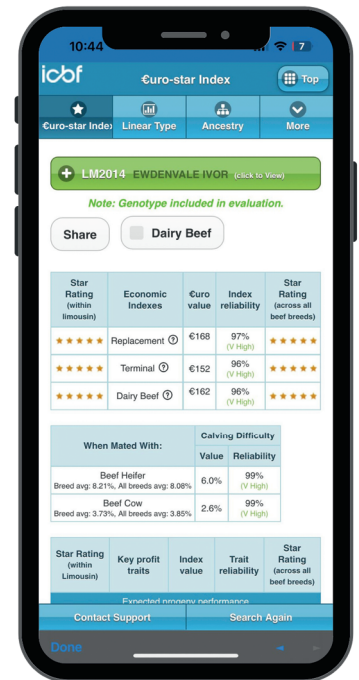
ICBF Animal Search

Animal Tag, AI Code & Herd Book Number  Animal Name Or Part of Name

[Active Bull List »](#)

You can search an animal here

This is the information you can see on the animal searched



## Inbreeding Checker

The inbreeding checker allows a farmer to check for possible inbreeding if their females are mated with a particular AI sire or stockbull prior to mating.

**Inbreeding**  
Female Input Screen for

Age  Eligible Females (over 10 months)  All Females

Breed  All  Beef  Dairy

You can select Eligible or All Females.

You can select breed by All, Beef or Dairy

AI Code / Tag Number	Bull Name	Breed
1 CTE	CARRONROE ERNIE	AA
2 KYA	CORNAMUCKLA LORD HARDY K222	AA
3 CH4252	CAVELANDS LEVI	CH
4 HE4287	NORMANTON 1 LAERTES ET (HYF)	
5 LM4058	LODGE HAMLET	
6		
7		
8		
9		
10		

Bull tag can be added here

Once you have the bull(s) added click Submit

Submit

The Inbreeding Checker cannot be run on animals that have no sire recorded. An inbreeding level of 6.25 and under is deemed acceptable.

## Inbreeding Results

### Disclaimer

We have chosen 6.25% or greater as the cutoff for inbreeding. A mating resulting in inbreeding below this is allowed. This figure is a generally accepted rule of thumb for the maximum level of inbreeding. If you want to keep the inbreeding level lower than this, please click on the detailed section to see exact inbreeding for the offspring of a particular mating.

**Inbreeding Table**

6.25%	Two Common Grandparents
12.5%	Half Brother - Half Sister Mating
12.5%	Grandfather - Granddaughter Mating
25%	Full Brother - Full Sister Mating
25%	Parent - Offspring Mating

This is a chart of the levels of inbreeding

View Results:

You can change the view from Basic to Detailed

## Sales Catalogue

A farmer can create a sales catalogue through their HerdPlus account. This can be found through Applications > Catalogue.

You can select the animals you wish to include in your Catalogue

Once the animals have been selected click continue

Total: 53 animals  
Selected: 5 animals

Select your Animals for the Catalogue

CONTINUE →

Showing 1 to 53 of 53 entries

FB	Animal Number	Animal Name	From Date To Date	Sex	Main Breed	Sire Number	Dam Number	From To	Select For Sale
	564			M	LM	541	864		<input type="checkbox"/>
	563		07-MAY-23	F	LM	541	392	0	<input checked="" type="checkbox"/>
	562		13-APR-23	F	LM	541	370	0	<input type="checkbox"/>

Catalogues

Reset Order None

Name	Change Date	Order	Lot No.	Animal Number	Animal Name	Birth Date	Sex	Sire	Dam	Breed	Action
ch...		1	1	563		07-MAY-23	F	541	392	LM	🗑️🔊👤
		2	2	076		25-FEB-23	M	AA4089	310	AA	🗑️🔊👤
		3	3	560		02-APR-23	M	541	888	LM	🗑️🔊👤
		4	4	552		05-MAR-23	F	541	234	LM	🗑️🔊👤
		5	5	882		27-FEB-21	F	AA2309	300	AA	🗑️🔊👤

ADD ANIMAL

Remove All Animals

Beef Dairy

Beef Pedigree Catalogue  Beef Commercial Catalogue

Generate Catalogue

Here you can select a catalogue type and click "Generate Catalogue". You can then download the PDF.

This is an example of a Beef Commercial Catalogue.

= Genomic Evaluation

HerdPlus Profit through Science												Euro-Stars Listing				icbf		
Animal Details							Replacement Index			Geno Eval	Due to Calve	Expected Sire	Sire Breed					
Lot	Tag	Date of Birth	Sex	Calving	Breed	Sire	Dam's Sire	Index	Euro-Stars					Owner				
										Across Breed								
1	563	07-May-23	F	-	50% LM 22% HE 22% HO	541	-	€96	★ ★ ★		No							
2	076	25-Feb-23	M	-	50% AA 47% HO 3% FR	AA4089 (INTELAGRI MATTEO E.T)	LHZ (IG) LAURAGH EVERT)	€214	★ ★ ★ ★ ★		No							
3	560	02-Apr-23	M	-	50% LM 22% AA 22% HO	541	-	€112	★ ★ ★ ★		No							

## Wesley Browne, Co. Monaghan

"I find the information HerdPlus supplies about breeding animals to be very useful in the day to day running of my farm. It helps me hugely in making breeding decisions in terms of the indexes and to follow the direction in which the herd is going. You can see how many calves a cow produces, their weight performance and the star ratings of all the animals. I find the bottom 10% of animals in my herd to be quite accurate and it helps with culling decisions. The Suckler Cow Report is very useful as it has all the information on the cow and how she is performing. All of the useful information any suckler farmer needs is always available which makes it a great tool to use. I would definitely recommend HerdPlus to other farmers who want to make genetic gains and improvements in their herd."



## James Lacey, Co. Tipperary

"I have a Pedigree herd, using the HerdPlus service it provides all the ancestry details for my animals in the one place. It has helped me place a greater emphasis on better genetics when purchasing animals as I can target high Replacement index animals for breeding in my own herd. If I want to purchase an animal, I can get access to it's information on the Animal Search if the seller is in HerdPlus. Being able to

combine the genetic information of an animal with its own appearance is a game changer. Genotyping my animals provides a lot of benefits and gives confidence to potential buyers that my stock have their parentage confirmed and have been included in a genomic evaluation. The Beef Calving Report is important for my herd to identify the cows that are doing the business for me."



# HerdPlus App

icbf



Download for  
**FREE** today!

*Recording events  
and viewing animal  
profiles has never  
been so easy!*

Instant access to a wide  
range of HerdPlus services

- Your latest HerdPlus Reports  
e.g. suckler cow and beef output reports.
- Record essential data anytime, anywhere  
e.g. liveweights, serves, scanning data.
- View Profiles for live, up to date information  
e.g. Euro-Star and fertility profiles.



[www.icbf.com](http://www.icbf.com)

Ph: 023-8820452

## Useful Contact Information

### ■ DAFM

Main Switchboard: **057 8674400**

Agfood: **049 4368288**

Suckler Carbon Efficiency Programme: **057 8674454** or [scep@agriculture.gov.ie](mailto:scep@agriculture.gov.ie)

### ■ National Calf Registration & Movements

CMMS (Movements): **023 8832890**

Calf Reg: **023 8832890**

Permits: **023 8832891** or [agripermits@capita.com](mailto:agripermits@capita.com)

### ■ Other

BVD Helpline: **091 507 648**

Animal Health Ireland: **071 9671928**

Weatherbys: **045 875521**

Bord Bia: **01 6685155**

Cattle Weighing Scales Rental Service: <https://www.icbf.com/the-weighing-scheme/>