



Using the DBI to generate quality dairy-beef calves

Siobhán Ring
sring@icbf.com

March 2023



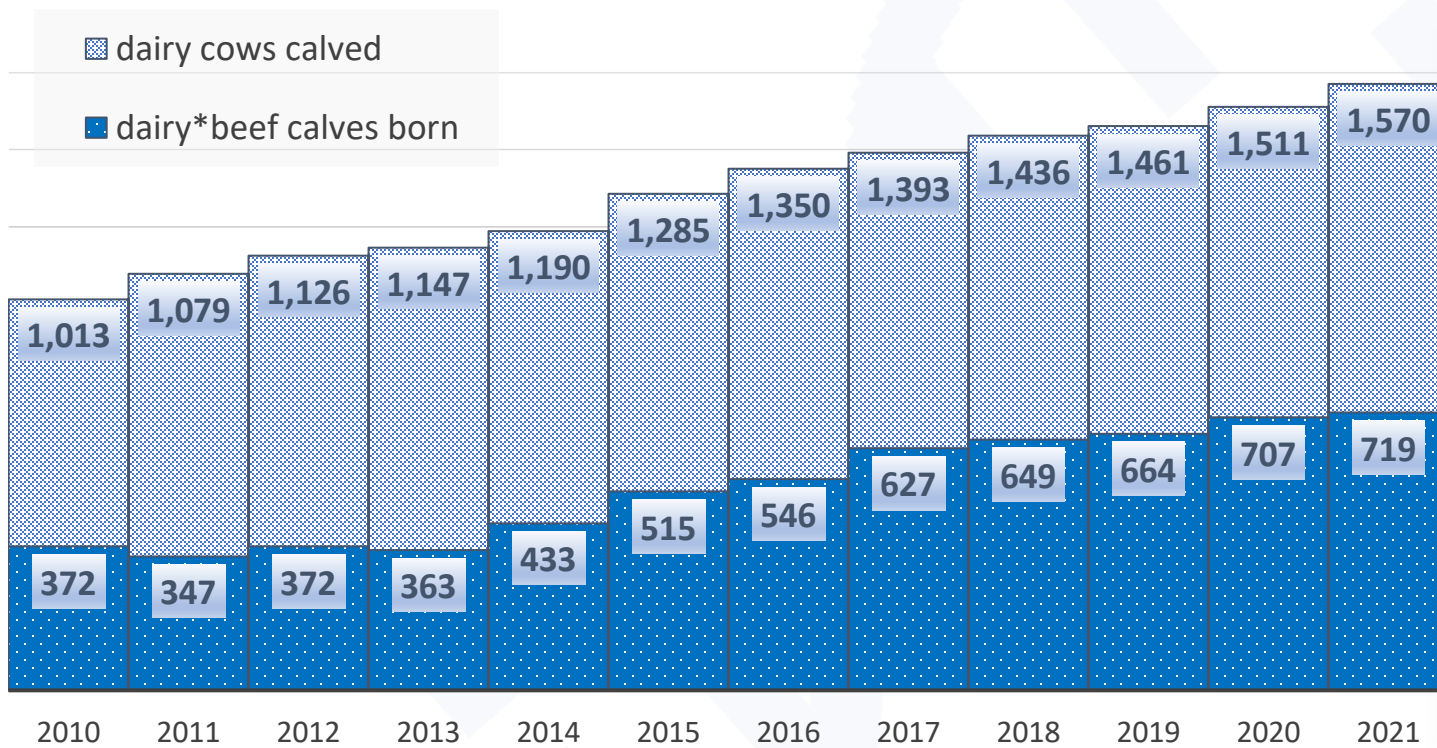
An Roinn Talmhaíochta,
Bia agus Mara
Department of Agriculture,
Food and the Marine

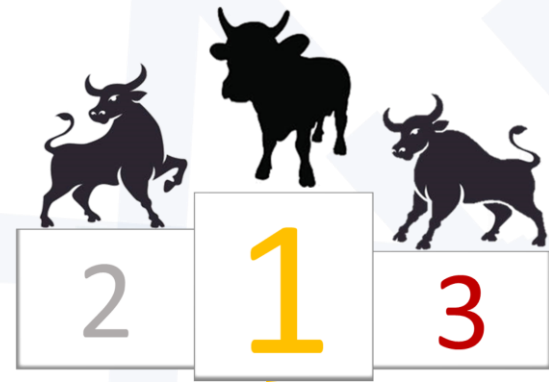


AgTech - it's in our DNA

The Irish Dairy Industry

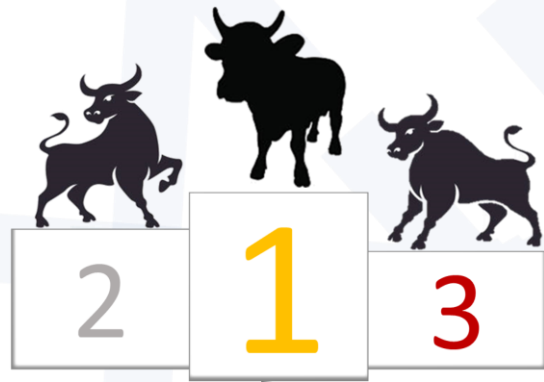
Dairy Cow Calvings and Dairy*Beef Births ('000)



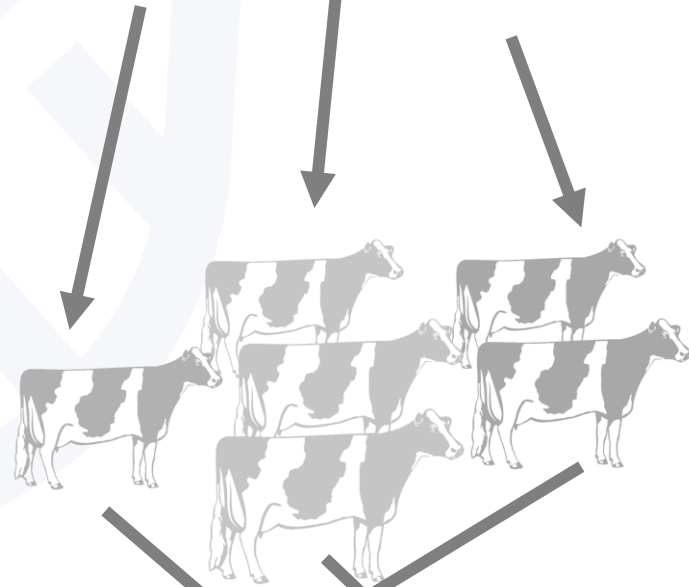




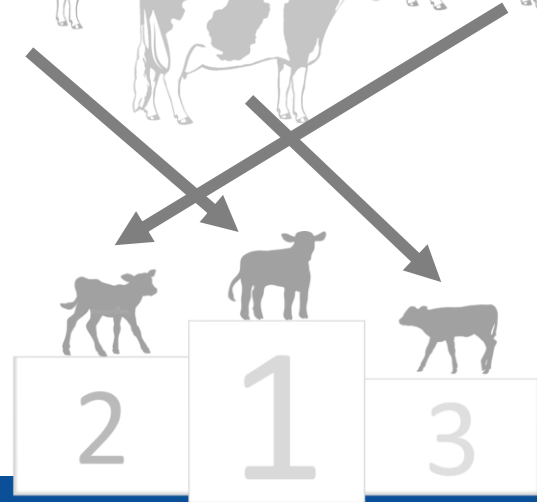
Rank Sires



Rank Matings

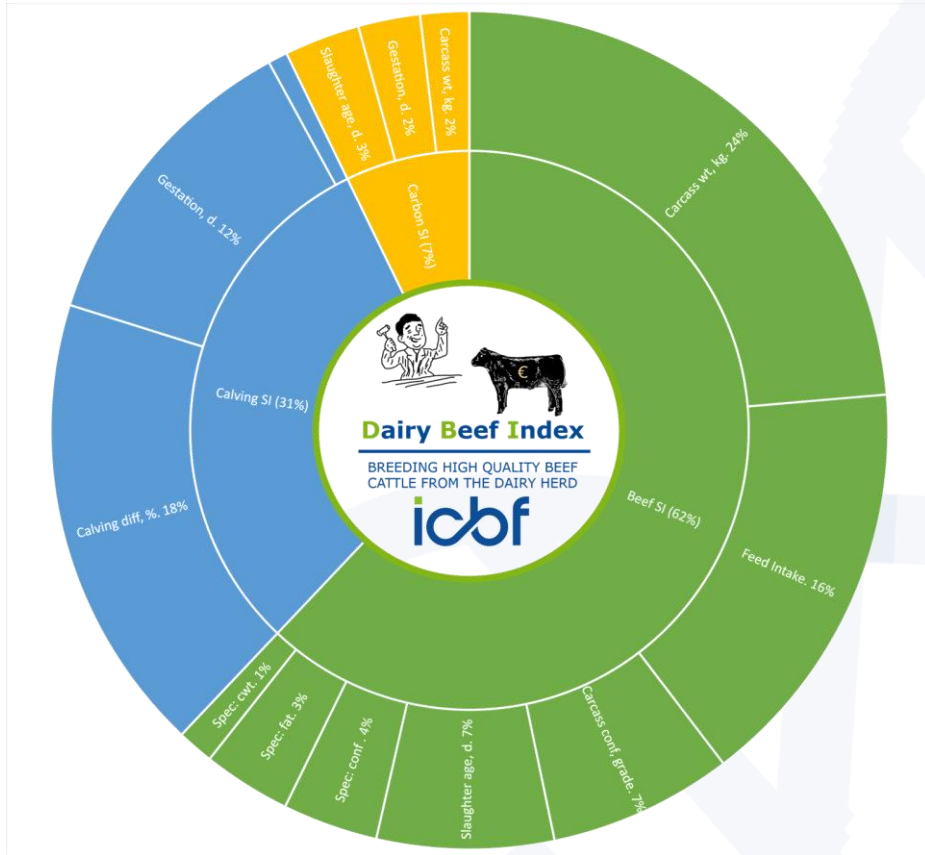


Rank Progeny



The Dairy Beef Index (DBI)

$$\text{DBI} = \text{Calving Merit} + \text{Beef Merit} + \text{Carbon Merit}$$



- Dystocia
- Gestation
- Stillbirth

- Feed intake
- Docility
- Carcass weight
- Carcass conformation
- Carcass fat
- Age at slaughter
- Factory-specification
- Polled

- Carcass conformation
- Age at slaughter
- Gestation

DBI = Traits relevant to breeder & rearer/finisher

It's Been Validated... It Works

Additional revenue (for 20 calves)

€79.60 for dairy producer

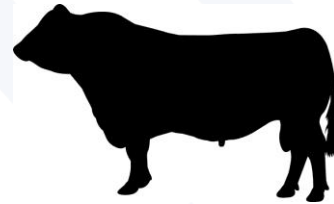
€829.40 for finisher



Conclusion:

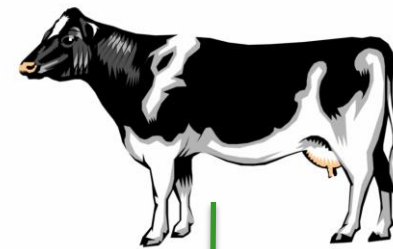
Use high ranked DBI bulls rather than high ranked calving bulls

Bull ranked top 20%
for calving traits

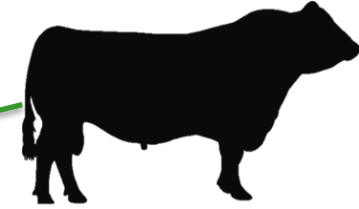


1% Dystocia
283 d Gestation

301kg
O+ 3+
44% in spec



Bull ranked top 20%
for Dairy Beef Index



2% Dystocia
284 d Gestation

310kg
O+ 3=
48% in spec

what does the DBI figure mean?

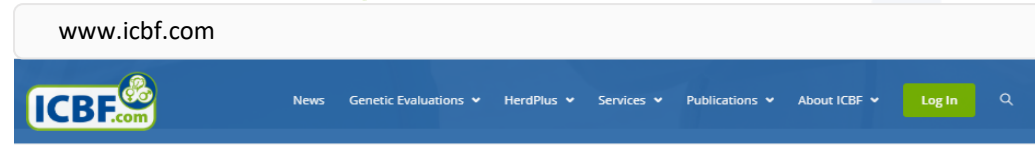


€70

€110

Expect €40 additional revenue from me, through a combination of calving, beef & carbon merit benefits (not all at sale)

Accessing The Dairy Beef Index



1

Animal Search

SEARCH NOW

2

Stockbull Finder

SEARCH NOW

3

Join HerdPlus

LEARN MORE

3

Active Bull Lists

VIEW NOW

4

Sales Catalogue

Dairy-Beef Index and Key Profit Traits

Evaluation Date: Mar 2020 Next Evaluation Date: 26-May-2020

	Dairy Beef Index	Calving Value SI	Beef Value SI	Gestation	Dairy Cow CDiff	Dairy Heifer CDiff	Carcass Weight	Carcass Conf
<i>All Breed Average</i>	€44.43	-€39.96	€90.19	+2.64 days	5.67%	11.97%	16.39kg	1.4
<i>COMMERCIAL Breed Average</i>	€44.43	-€39.96	€90.19	+2.64 days	5.67%	11.97%	16.39kg	1.4
<i>Hereford Breed Average</i>	€18.71	-€12.85	€33.31	+1.38 days	4.51%	11.61%	4.34kg	0.49

Lot 3
ALLOWDALE PHARALIS
IE151225390616

Breed: Hereford GENOTYPED

Birthdate: 28-Sep-2015

Sire: GGM (Gageboro Morgan); Sire Verified (SNP)

Dam: IE151225380185 (Allowdale Precision 185); Dam Verified (SNP)

<i>Dairy Beef Index</i>	Dairy Beef Index -€21 (Rel:61%)	Calving Value SI -€28 (Rel:67%)	Beef Value SI €7 (Rel:54%)
<i>Calving Traits</i>	Gestation +1 days (Rel:81%)	Dairy Cow CDiff +5.6% (Rel:68%)	Risk of Dairy Heifer CDiff High
<i>Beef Traits</i>	Carcass Weight -3.1 (Rel:57%)	Carcass Conformation +0.45 (Rel:49%)	Dairy Heifer CDiff +12.7% (Rel:50%)

Additional Information

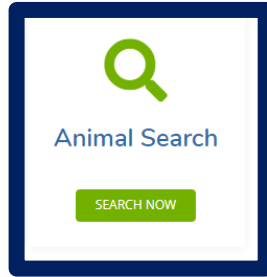
5

AI Company material

1

The Animal Search

Use to look up any AI bull, stockbull or pedigree female – need Tag number / name / AI code



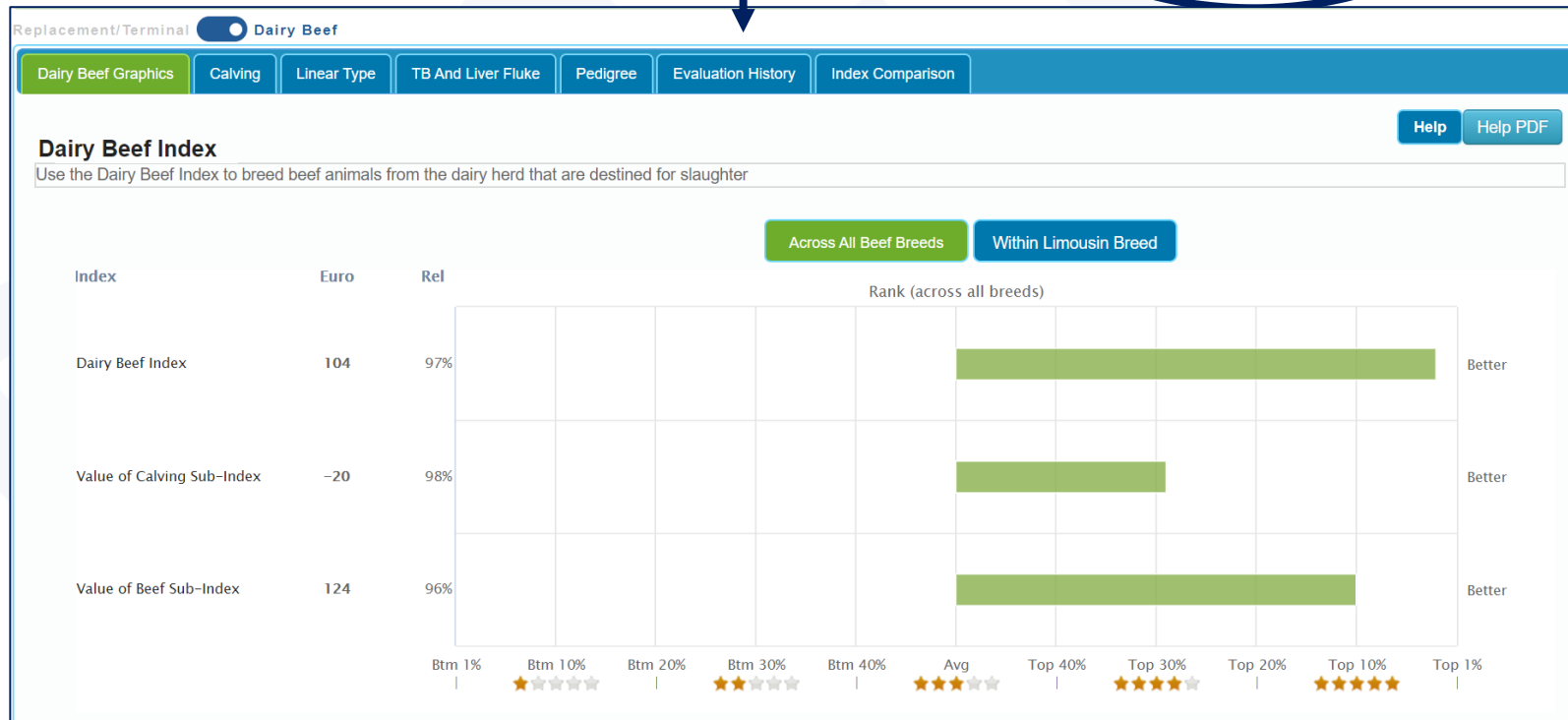
ICBF.com Irish Cattle Breeding Federation

ICBF Animal Search

Search By:

Animal Tag, AI Code, Herd Book Number
 Name or part of name (Males Only)

IE151225390616 Search





2

Stockbull Finder

Find a stockbull to meet your herd requirements – like Done Deal!

STOCK BULL FINDER

Replacement Index
To breed future cows for the suckler herd

Terminal Index
To breed beef animals from the suckler herd that are destined for slaughter

Dairy Beef Index
To breed beef animals from the suckler herd that are destined for the dairy herd

Select Dairy Beef Index if searching for a beef bull for the dairy herd

Filter by breed, county, age, index etc.

Angus Bulls For Sale In Cork

ANGUS	ANGUS	ANGUS	ANGUS
CARRIGROE SAPPHIRE	CLARA SCHOLAR E.T. (ET)	WESTELLEN MAVERICK V860	KEALKIL RED SEAMAN
372214625761728	372212617941038	3722238203500860	372215107670531
CORK	CORK	CORK	CORK
ABOUT	CONTACT	WEIGHT	CALVING
BREED	Angus	BREED	Angus
BIRTH DATE	16-AUG-19	BIRTH DATE	08-SEP-19
GENOMIC EVAL	YES	GENOMIC EVAL	NO
SIRE	IE211142110416	SIRE	SVK
BIRTH WEIGHT	-	BIRTH WEIGHT	-
REPLACEMENT INDEX	€ 161 ★★★★★	REPLACEMENT INDEX	€ 100 ★★★★★
TERMINAL INDEX	€ 70 ★★★★★	TERMINAL INDEX	€ 98 ★★★★★
DAIRY BEEF INDEX	€ 48 ★★★★★	DAIRY BEEF INDEX	€ 92 ★★★★★

Active Bull Lists

ICBF Bull List of Active Beef AI Bulls with at least 100 Dairy Calvings, Ranked on the Dairy Beef Index

©ICBF2019. For more information please call 0238820452 or log onto www.icbf.com

Bull Details		Dairy Beef Index (DBI) Summary						Calving Value Traits				Beef Value Traits				Progeny Records	
Rank	Breed	DBI	DBI Rel	Calving Value	Calving Value Rel	Beef Value	Beef Value Rel	Gest	Risk of Dairy Heifer CDiff	Dairy Heifer Calv Diff	Dairy Cow Calv Diff	Carc. Wt. (kg)	Spec: Carc. Wt.	Carc. Conf.	Spec: Carc. Conf.	Calving Diff	Carc. Wt.
1	AU	€149	58%	€36	75%	€113	41%	-1.33	Low	5.8%	2.6%	17.1	11%	2.38	1%	205	0
2	AU	€141	71%	€18	86%	€123	54%	-0.54	Moderate	7.6%	3.4%	23.1	9%	1.92	2%	468	3
3	BB	€135	93%	-€9	95%	€144	91%	-1.43	High	8.6%	4.0%	18.4	11%	2.5	1%	10686	5529
4	SA	€134	83%	€37	79%	€97	88%	-0.93	High	9.1%	3.6%	23.5	9%	1.17	5%	2570	363
5	AU	€133	65%	€10	73%	€122	56%	0.31	Low	5.7%	2.7%	24.4	9%	2.1	1%	182	6
6	LM	€129	91%	-€20	87%	€149	95%	3	Moderate	6.2%	3.4%	31.2	7%	2.48	1%	5153	568
7	BB	€109	80%	-€26	86%	€135	75%	-0.74	High	9.0%	3.5%	25	8%	2.21	1%	671	129
8	LM	€109	95%	-€11	98%	€120	92%	2.36	Moderate	7.7%	2.8%	19.7	10%	2.17	1%	31398	9550
9	BB	€107	90%	€3	92%	€104	88%	-0.18	Moderate	7.2%	2.8%	15.8	12%	1.93	2%	1340	1393
10	LM	€104	77%	-€25	80%	€128	75%	2.8	Low	5.9%	2.3%	20.6	10%	2.12	1%	2432	17

Higher € values always more desirable

ICBF Bull List of Active Beef AI Bulls with at least 100 Dairy Calvings, Ranked on the Dairy Beef Index

©ICBF2019. For more information please call 0238820452 or log onto www.icbf.com

Bull Details		Dairy Beef Index (DBI) Summary						Calving Value Traits				Beef Value Traits				Progeny Records	
Rank	Breed	DBI	DBI Rel	Calving Value	Calving Value Rel	Beef Value	Beef Value Rel	Gest	Risk of Dairy Heifer CDiff	Dairy Heifer Calv Diff	Dairy Cow Calv Diff	Carc. Wt. (kg)	Spec: Carc. Wt.	Carc. Conf.	Spec: Carc. Conf.	Calving Diff	Carc. Wt.
1	AU	€149	58%	€36	75%	€113	41%	-1.33	Low	5.8%	2.6%	17.1	11%	2.38	1%	205	0
2	AU	€141	71%	€18	86%	€123	54%	-0.54	Moderate	7.6%	3.4%	23.1	9%	1.92	2%	468	3
3	BB	€135	93%	-€9	95%	€144	91%	-1.43	High	8.6%	4.0%	18.4	11%	2.5	1%	10686	5529
4	SA	€134	83%	€37	79%	€97	88%	-0.93	High	9.1%	3.6%	23.5	9%	1.17	5%	2570	363
5	AU	€133	65%	€10	73%	€122	56%	0.31	Low	5.7%	2.7%	24.4	9%	2.1	1%	182	6
6	LM	€129	91%	-€20	87%	€149	95%	3	Moderate	6.2%	3.4%	31.2	7%	2.48	1%	5153	568
7	BB	€109	80%	-€26	86%	€135	75%	-0.74	High	9.0%	3.5%	25	8%	2.21	1%	671	129
8	LM	€109	95%	-€11	98%	€120	92%	2.36	Moderate	7.7%	2.8%	19.7	10%	2.17	1%	31398	9550
9	BB	€107	90%	€3	92%	€104	88%	-0.18	Moderate	7.2%	2.8%	15.8	12%	1.93	2%	1340	1393
10	LM	€104	77%	-€25	80%	€128	75%	2.8	Low	5.9%	2.3%	20.6	10%	2.12	1%	2432	17

Separate CDiff for heifers & cows, with risk – use most appropriate trait

ICBF Bull List of Active Beef AI Bulls with at least 100 Dairy Calvings, Ranked on the Dairy Beef Index

©ICBF2019. For more information please call 0238820452 or log onto www.icbf.com

Bull Details		Dairy Beef Index (DBI) Summary						Calving Value Traits				Beef Value Traits				Progeny Records	
Rank	Breed	DBI	DBI Rel	Calving Value	Calving Value Rel	Beef Value	Beef Value Rel	Gest	Risk of Dairy Heifer CDiff	Dairy Heifer Calv Diff	Dairy Cow Calv Diff	Carc. Wt. (kg)	Spec: Carc. Wt.	Carc. Conf.	Spec: Carc. Conf.	Calving Diff	Carc. Wt.
1	AU	€149	58%	€36	75%	€113	41%	-1.33	Low	5.8%	2.6%	17.1	11%	2.38	1%	205	0
2	AU	€141	71%	€18	86%	€123	54%	-0.54	Moderate	7.6%	3.4%	23.1	9%	1.92	2%	468	3
3	BB	€135	93%	-€9	95%	€144	91%	-1.43	High	8.6%	4.0%	18.4	11%	2.5	1%	10686	5529
4	SA	€134	83%	€37	79%	€97	88%	-0.93	High	9.1%	3.6%	23.5	9%	1.17	5%	2570	363
5	AU	€133	65%	€10	73%	€122	56%	0.31	Low	5.7%	2.7%	24.4	9%	2.1	1%	182	6
6	LM	€129	91%	-€20	87%	€149	95%	3	Moderate	6.2%	3.4%	31.2	7%	2.48	1%	5153	568
7	BB	€109	80%	-€26	86%	€135	75%	-0.74	High	9.0%	3.5%	25	8%	2.21	1%	671	129
8	LM	€109	95%	-€11	98%	€120	92%	2.36	Moderate	7.7%	2.8%	19.7	10%	2.17	1%	31398	9550
9	BB	€107	90%	€3	92%	€104	88%	-0.18	Moderate	7.2%	2.8%	15.8	12%	1.93	2%	1340	1393
10	LM	€104	77%	-€25	80%	€128	75%	2.8	Low	5.9%	2.3%	20.6	10%	2.12	1%	2432	17

Higher values for the value of beef traits is better

ICBF Bull List of Active Beef AI Bulls with at least 100 Dairy Calvings, Ranked on the Dairy Beef Index

©ICBF2019. For more information please call 0238820452 or log onto www.icbf.com

Bull Details		Dairy Beef Index (DBI) Summary						Calving Value Traits				Beef Value Traits				Progeny Records	
Rank	Breed	DBI	DBI Rel	Calving Value	Calving Value Rel	Beef Value	Beef Value Rel	Gest	Risk of Dairy Heifer CDiff	Dairy Heifer Calv Diff	Dairy Cow Calv Diff	Carc. Wt. (kg)	Spec: Carc. Wt.	Carc. Conf.	Spec: Carc. Conf.	Calving Diff	Carc. Wt.
1	AU	€149	58%	€36	75%	€113	41%	-1.33	Low	5.8%	2.6%	17.1	11%	2.38	1%	205	0
2	AU	€141	71%	€18	86%	€123	54%	-0.54	Moderate	7.6%	3.4%	23.1	9%	1.92	2%	468	3
3	BB	€135	93%	-€9	95%	€144	91%	-1.43	High	8.6%	4.0%	18.4	11%	2.5	1%	10686	5529
4	SA	€134	83%	€37	79%	€97	88%	-0.93	High	9.1%	3.6%	23.5	9%	1.17	5%	2570	363
5	AU	€133	65%	€10	73%	€122	56%	0.31	Low	5.7%	2.7%	24.4	9%	2.1	1%	182	6
6	LM	€129	91%	-€20	87%	€149	95%	3	Moderate	6.2%	3.4%	31.2	7%	2.48	1%	5153	568
7	BB	€109	80%	-€26	86%	€135	75%	-0.74	High	9.0%	3.5%	25	8%	2.21	1%	671	129
8	LM	€109	95%	-€11	98%	€120	92%	2.36	Moderate	7.7%	2.8%	19.7	10%	2.17	1%	31398	9550
9	BB	€107	90%	€3	92%	€104	88%	-0.18	Moderate	7.2%	2.8%	15.8	12%	1.93	2%	1340	1393
10	LM	€104	77%	-€25	80%	€128	75%	2.8	Low	5.9%	2.3%	20.6	10%	2.12	1%	2432	17

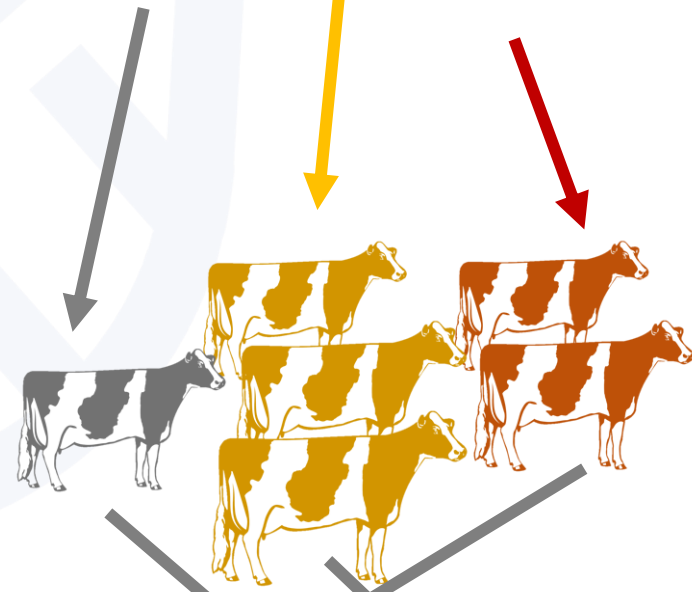
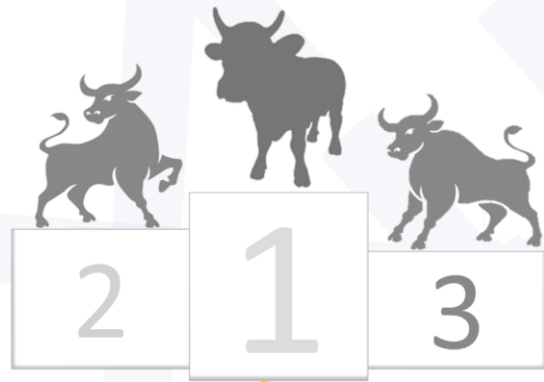
Indication of progeny performance



Rank Sires

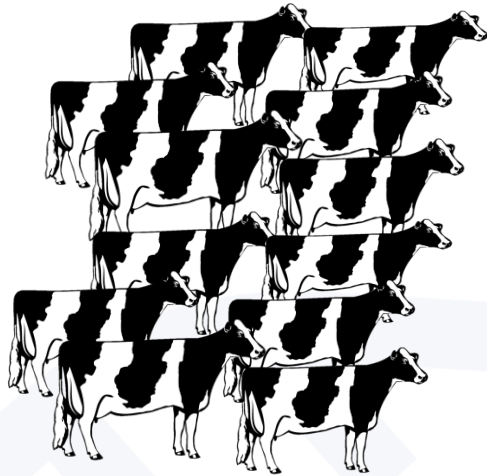
Rank Matings

Rank Progeny

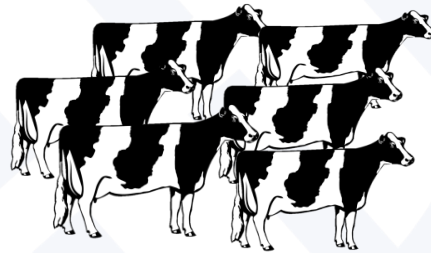


Tailored Mating Advice

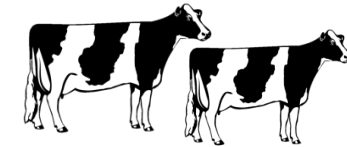
Females to mate to dairy bulls



Females to mate to beef bulls



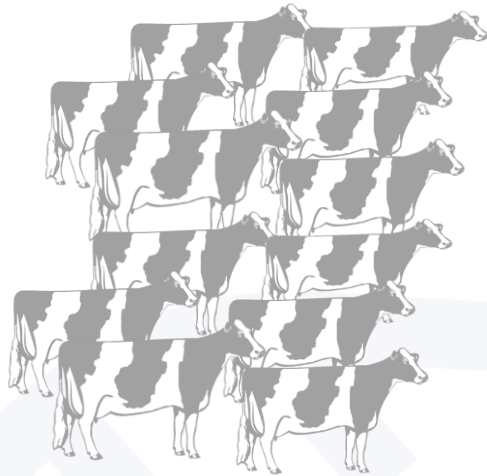
Females to cull (not mate)



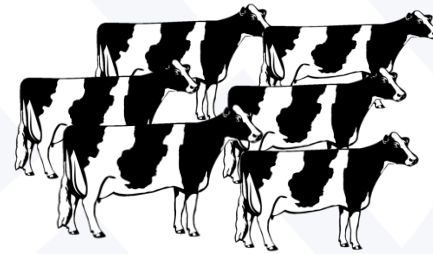
icbf

Tailored Mating Advice

Females to mate to dairy bulls



Females to mate to beef bulls



Beef Bulls Chosen

Rank	Code	Name	Breed	DBI €	DBI Rel %	Calving Value SI €	
1	AU4480	DAUPHIN	AU	147	80	52	95
2	LM2014	EWDENVALE IVOR	LM	144	95	-6	149
3	DPZ	DESPAGNOU	AU	140	83	8	131
4	SA2189	ULSAN	SA	137	87	46	91

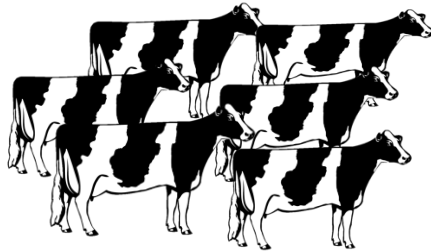


Females to cull (not mate)



Tailored Mating Advice

Females to mate to beef bulls



Beef bulls chosen

Rank	Code	Name	Breed	DBI €	DBI Rel %	Calv Value SI €	
1	AU4460	DAUPHIN	AU	147	80	52	95
2	LM2014	EWDENVALE IVOR	LM	144	95	-6	149
3	DP2	DESPAGNOU	AU	140	83	8	131
4	SA2189	ULSAN	SA	137	87	46	91



Index calculated



283 d gestation
2% dystocia
295 kg carcass

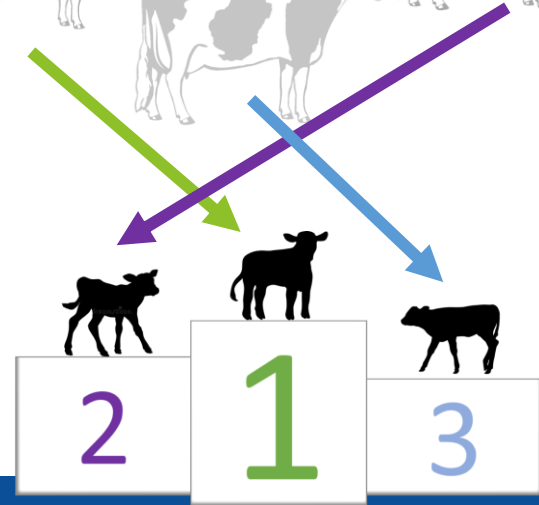
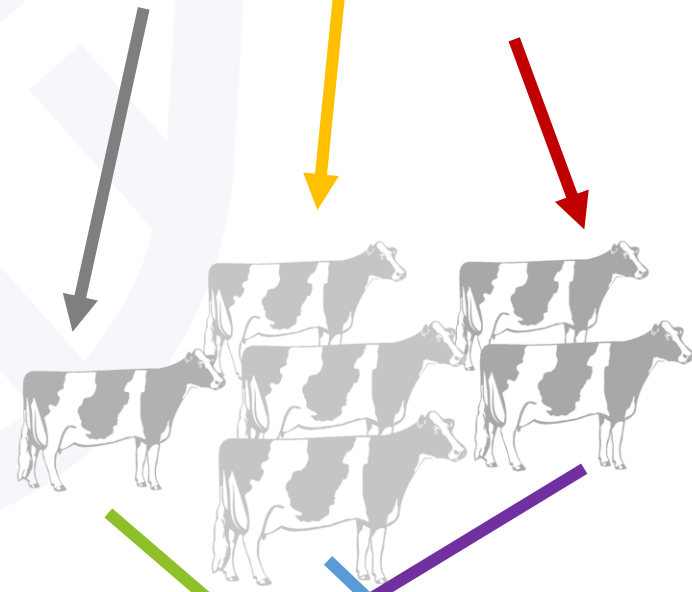
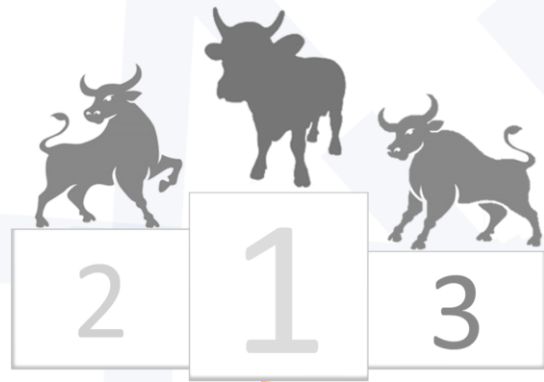
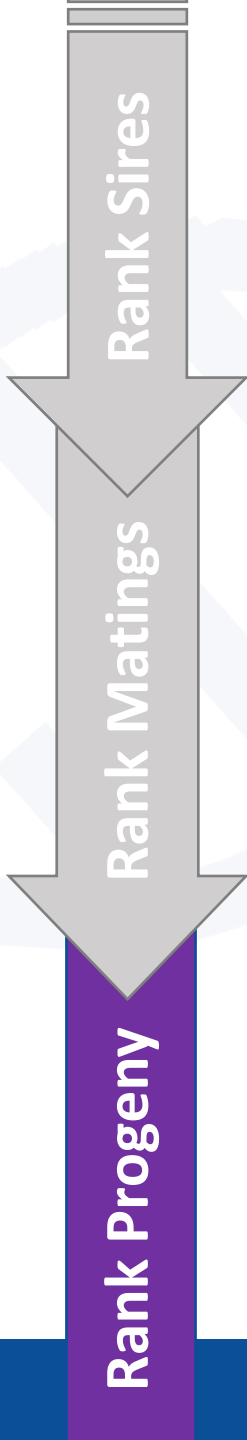


Tailored Mating Advice



Tailored Mating Advice





Commercial Beef Value



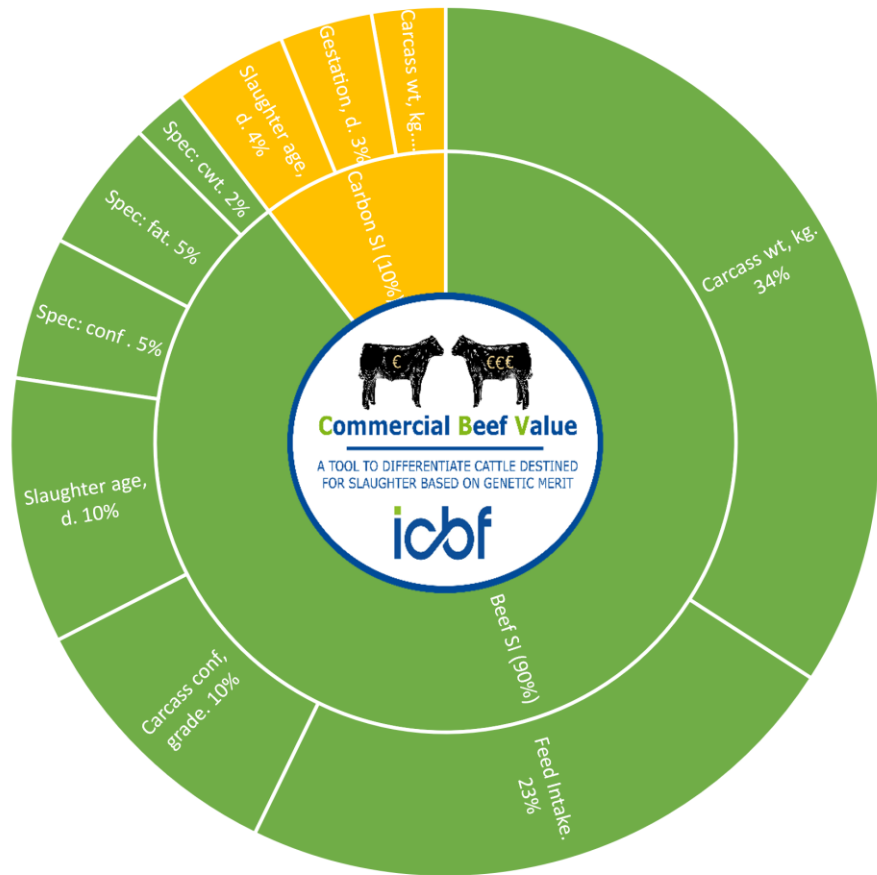
DNA
Verified



How can I tell
the good from
the bad?

Commercial Beef Value (CBV)

CBV = Calving Merit + Beef Merit + Carbon Merit



- Dystocia
- Gestation
- Stillbirth

- Feed intake
- Docility
- Carcass weight
- Carcass conformation
- Carcass fat
- Age at slaughter
- Factory-specification
- Polled
- Carcass conformation
- Age at slaughter
- Gestation

CBV = Traits relevant to rearer/finisher

- Expressed as a € value; expected profit at point of slaughter relative to others of same type
- Available for non-breeding animals
 - Suckler (beef sire & beef dam)
 - Dairy * Beef (beef sire & dairy dam)
 - Dairy * Dairy (beef sire & dairy dam); males only – not available on dairy females
- Within & Across Breed star ratings

Table 1. Distribution of CBV percentiles within and across breed types based on the Jan'23 Evaluation

	*	**	***	****	*****
Across Breed	-€37 to €35	€35 to €79	€79 to €189	€189 to €265	€265 to €374
Suckler	€37 to €178	€178 to €229	€229 to €267	€267 to €304	€304 to €391
Dairy*Beef	-€3 to €45	€45 to €62	€62 to €80	€80 to €123	€123 to €238
Dairy*Dairy	-€58 to -€1	-€1 to €16	€16 to €28	€28 to €41	€41 to €93

Minimum Beef Bull Requirements to achieve High CBV progeny

•Required:

- Dairy Herd EBI Scorecard: Beef SI
- Beef SI of Beef Bull's DBI

Herd Number: D3250947 (Eval Nov 2022)	Your Herd	National Average	National Top 10%	Your National Rank	Star Rating ¹
Herd EBI	€202	€159	€194	95%	*****
Milk Sub-Index (Milk, Fat & Protein)	€ 60	€44	€60	91%	*****
Fertility Sub-Index (Calving Interval & Survival)	€ 97	€66	€82	97%	*****
Carbon Sub-Index	€ 2	€7	€14	20%	*
Calving Sub-Index (Gestation, Calving Difficulty, Mortality)	€ 32	€28	€37	77%	****
Beef Sub-Index (Carcass Weight, Conformation & Fat)	€ -4	€-2	€4	39%	**
Maintenance Sub-Index (Cow Liveweight)	€ 7	€13	€20	7%	*
Management Sub-Index (Milking speed & Temperament)	€ 2	€1	€3	79%	****
Health Sub-Index (SCC, Mastitis, & Lameness)	€ 4	€6	€9	30%	**

¹ Star Rating: * = 1 - 20% ** = 21 - 40% *** = 41 - 60% **** = 61 - 80% ***** = 81 - 100%

Figure 1. Example of Herd EBI Scorecard which gives dairy farmers an indication of their herd-rank and star rating on the Beef SI

Table 3. Minimum required DBI Beef SI of (AA/HE) beef bulls to achieve a 4* or 5* CBV dairy-beef calf categorized by dairy herd ranking on EBI Beef SI

Herd Rank on Dairy Beef SI (EBI)	Herd Dairy Beef SI (EBI)	Beef Bull Beef SI (DBI) to achieve CBV of:			
		€80 [4*CBV]	€93 [4*CBV]	€123 [5*CBV]	€176 [5*CBV]
Average of 1* Herds	-€13	€86	€99	€129	€182
Average of 2* Herds	-€5	€78	€91	€121	€174
Average of 3* Herds	-€2	€75	€88	€118	€171
Average of 4* Herds	€0	€73	€86	€116	€169
Average of 5* Herds	+€4	€72	€82	€112	€165

Summary

- **Dairy Beef Index**
For selecting beef sires for use on the dairy herd
- **Sire Advice**
For identifying the optimum matings
- **Commercial Beef Value**
For identifying quality beef stock to buy

Our Farmer & Government Representation



An Roinn Talmhaíochta,
Bia agus Mara
Department of Agriculture,
Food and the Marine



Our AI & Milk Recording Organisations



Our Herdbooks



Acknowledging Our Members