

# THE BULLETIN

ICBF Genetics Newsletter - April 2022



This is a never before seen photo of 'CF52', 'Doonally New', on the day he was purchased in France, on the 27th of February 1998. He was bought by Sligo AI, Doonally, Sligo (NWCBS).

Picture courtesy of Paddy Hennelly & Cormac Monaghan (NWCBS)

## 'Gene Ireland' - who is he?

By Pat Donnellan

The task of matching a bull's figures to his fame is ICBF's primary function.

ICBF Euro-Star figures have always caused a difference of opinion between people in terms of their own experience of a bull. That's only normal – not all of the good and bad points of a bull's offspring are recorded in the ICBF database.

Also, the ICBF index values give an overall **'on average'** prediction of how a bull will breed. Some people might only have had the few good animals off a bull and not the poorer quality ones. That is understandably what certain opinions are based on.

ICBF's preferred method for assessing a bull's progeny is to progeny test him. The name that ICBF gives to this process is 'Gene Ireland'.

## NEWSLETTER HIGHLIGHTS

- Gene Ireland
- Technical News
- AI Bull News
- Dairy AI Bull Lists
- Beef AI Bull Lists
- Industry Contacts

'Gene Ireland' is where straws of a young bull are **distributed** across a wide variety of herds and their progeny have data recorded on them for various traits. The key part of a progeny test however is that the same data is also recorded on all of their herdmates. This allows ICBF to reflect the general opinion on a bull for the same traits.

'For the same traits' however are very important words to remember. This is because many bulls which were breed building legends in their day have poor '€uro-Stars'. What's important is that those bull's have data recorded in the ICBF database for the same traits that are in conflict with their legend status. It is a subject that we will cover in a future newsletter.



Beef progeny test calves and cattle being reared in the old 'Centralised Progeny test' programme at Dovea AI Centre in the 1990's.



Each AI Station reared progeny of their own beef testbulls alongside progeny of proven Holstein 'reference' bulls. The same 'reference' bulls were used across all the AI Station farms.

"CF52" was progeny tested through the progeny test program that was in place prior to 'Gene Ireland'. It was called the '**Centralised Progeny Test**'. A Beef Test bull would have 10 calves sired by him out of dairy cows purchased and reared alongside progeny from other well known proven AI Sired dairy cross calves. This happened on the AI Centre's own farm. The cattle were weighed regularly and taken to slaughter where all of their data was compared against each other and index figures calculated.

The arrival of the ICBF database then allowed for all of this to happen out on farm with bigger numbers of progeny. This allowed a bull's progeny to be assessed on different farms under different conditions. A bull's figures were updated as more progeny results came in and didn't just remain based on those first 10 purchased progeny, as was the case. It also allowed for females to be assessed.



"Gene Ireland" has 4 different parts however all of these parts have one major component in that they are all tightly linked to the ICBF cattle breeding database.

1. Generate a panel of bulls from the ICBF database.
2. Evaluate their progeny for the main beef traits on-farm.
3. New difficult to measure traits are assessed at the ICBF progeny test Centre.
4. Estimate their genetic merit & promote the best bulls for use across the national herd.

"CF52" as a mature bull in Doonally, Sligo (mid 00's).

So how did 'CF52' do on his progeny test?

Not surprisingly, he did very well. He was moderate for calving but his progeny excelled for the liveweight and carcass traits. The superiority that his first calves displayed over their herdmates remains to this day. For example; his progeny test results showed that his first progeny had heavier carcasses than their herdmates at slaughter. Looking at all of his progeny that have been slaughtered since then, they are 'on average' 20kgs heavier than their herdmates.

Date of Evaluation	Sire	Progeny	Carcass Weight		WHPR Data	
			Progeny	Herdmates	Muscle	Skeletal
September 2021	CF52	16,945	393 kgs	373 kgs	120	113



'CF52' offspring are 'on average' 20kgs heavier than their herdmates.

Of course in some herds the difference was greater and in others it was less but overall the data backs up the talk – the ‘CF52’ cattle were better than the rest (data above is available in the ‘Animal Search’ section of the ICBF website).

A progeny test is the quickest and most accurate way to get a handle on how a bull is breeding for important traits early in his life. The traits being looked at are ones that will affect the eventual profit or loss that a farmer will feel from using him.



Therefore it is important that the test is carried out efficiently so that as many young bulls as possible are tested every year so as the likes of a ‘CF52’ is unearthed. **After all, looking at his picture as a young bull – who could have predicted that he would have turned out to be as good as he did! - that is why we progeny test.**

### ‘Gene Ireland’ young bulls – don’t miss out!

Genomics has changed the way AI bulls are used around the world. Ireland is no different and has been a leader in this area. It used to be the way that young ‘Testbulls’ were mainly used on later calving cows. No point in using a more expensive proven bull.



Over the past 15 years however ICBF has co-ordinated the assembly of ‘packs’ of young very high indexed beef & dairy (Euro-Star & EBI) bulls from participating AI Companies. ICBF recruits herds to use these bulls, distributes the semen and collects the data afterwards. The teams of bulls in these ‘packs’ removes the risk involved in using these young bulls. Many of the herds using these Gene Ireland packs do it every year. Their willingness to take part every year is proof of their satisfaction with their resulting dairy cows and beef animals alike. Gene Ireland is a strategy that works and new farmers are becoming aware of this and joining the program every year.

## Gene Ireland Dairy



The Gene Ireland Dairy program kicked off in 2005. It was the first time that teams of high indexed young Irish bulls had been put together in Gene Ireland packs.

Pictured above is one of those first bulls to be tested in this way - 'JRU' owned by NCBC – was a high EBI 2005 born son of 'Ruud 22' out of a 'Sunnyboy' cow.

If you are a commercial or pedigree dairy farmer who would like to get involved in Dairy Gene Ireland and use high EBI young dairy bulls please contact Mary McCarthy: [mmccarthy@icbf.com](mailto:mmccarthy@icbf.com)

## Gene Ireland Beef



The Gene Ireland Beef program started in 2008. The Simmental bull 'Derrough Samual' (DRU) was on it's bull panel that year.

Owned by 'Dovea Genetics' his progeny excelled in their progeny test herds and he now has a very high 5 star 'Replacement' Index of €138 (98%).

Likewise, If you are a commercial or pedigree breeder who would like to get involved in Beef Gene Ireland and get access to these high indexed young Beef Testbulls please contact Niall Kilrane: [nkilrane@icbf.com](mailto:nkilrane@icbf.com).

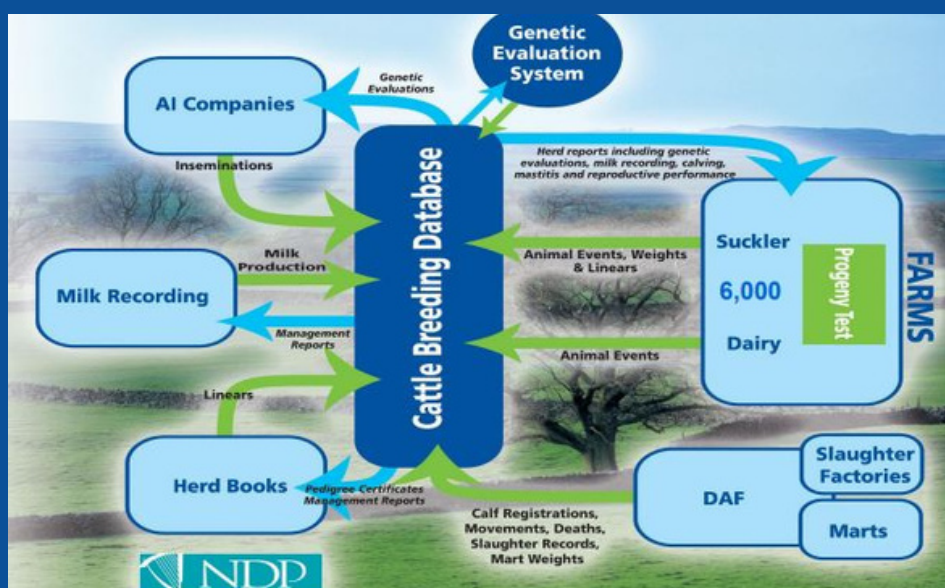
## Dunard Navigator – another Gene Ireland success story!

'Dunard Navigator (AA4603) is an Angus bull that was identified on the ICBF database and purchased by ICBF to take part in the Gene Ireland program. Sired by another Gene Ireland bull 'Carrigroe Kian' he was bred by Andrew Mathews, Kilcommon, Cahir, Co.Tipperary. He sired outstanding progeny test calves and has now been recruited by 'Dovea Genetics' to stand at their Thurles stud.



## Gene Ireland – Industry collaboration at its best

The ICBF database stores a pedigree animal's ancestry details alongside their Euro-Star figures - this means that a Breed Society can easily identify young bull's within their Herdbook that rank highly on a particular index of interest. ICBF kicked off using the ICBF database to select young beef bulls for progeny testing through



'Gene Ireland Committee' meetings back in 2015. Representatives from across the industry came together to select high indexed young bulls from the ICBF database. Many great bulls were found in this way such as: 'Curaheen Earp', 'Curaheen Dickens', 'Moondharrig Knell', 'Knottown Randy', 'Doon Giorgio' and 'Dunard Navigator'.

ICBF, NCBC, Dovea Genetics, Eurogene AI and the Irish Hereford, Limousin & Charolais Societies are continuing on this approach by starting their young bull search with listings of high indexed young Irish bulls from the ICBF database.

## NCBC & Gene Ireland

NCBC interacts very closely with the ICBF database and continues to progeny test the majority of the bulls that go through Gene Ireland. 'Curaheen Earp' (SI2152) was among one of the first young bulls to be identified based on his 'Replacement Index' for progeny testing. Having had semen collected off him for progeny testing and pedigree matings by ICBF he was then purchased by NCBC. He has become one of the most popular Simmental bulls available in AI. He now has over 12,500 calves registered to him in the ICBF database.



## The Irish Charolais Society & Gene Ireland

The Irish Charolais Society have been very active in incentivizing the use of certain Charolais AI Sires in dairy herds so as to identify bulls with short gestation and calving ease. They are now also setting out on buying young Irish Charolais bulls off ICBF Gene Ireland listings every year for AI whose breeding and 'Dairy Beef' index figures would make them very suitable for use in dairy herds.



'Bivouac' (pictured above) is a bull that the Irish Charolais Society have identified and assessed the calves of for calving ease and gestation length.



You might not see many calves off him in Carrick but that doesn't mean he's not a 'good' bull. He is a very good example of how much variation there is within breeds to be able to select strains within the same breed to suit different purposes.

Pictured opposite are 'Bivouac' x dairy cow sired calves on one of the dairy herds that the Irish Charolais Society is working with to see which AI Sires work well on dairy cows.

## The Irish Limousin Society & Gene Ireland



The Irish Limousin Society is identifying bull's on the ICBF database for semen collection and is progeny testing them through 'Gene Ireland'. 'Brackan Ruben' (LM7641) is one of the young Irish bred Limousin bulls that they are progeny testing through the Gene Ireland 'Dairy-Beef' progeny testing program.

'Ruben' has sky high index figures with a Dairy Beef index of €147. Sired by 'Tomschoice Lexicon' he is a great example of how data recorded by Irish farmers in the ICBF database is being used to find easy calving short gestation bulls for crossing on dairy cows.

## The Irish Hereford Society & Gene Ireland

The Irish Hereford Prime beef producer group have made a substantial investment in a new beef genetics sustainability program. The first steps on the road to an enhanced sustainability policy for the Irish Hereford Prime beef brand has seen the group partner with ICBF, Dovea Genetics and the Irish Hereford Breed Society, to identify and promote bulls capable of further improving the quality and sustainability credentials of its premium beef brand. The initiative in the first year sees the roll out of three new Hereford AI sires suitable for Irish dairy and suckler farmers this Spring. The AI Straws from these three new bulls are being put through their paces on the ICBF Gene Ireland Dairy Beef Programme in 2022.



Timolinpoll 1 Hercules



Corlismore Cormac



Skehanore Fruitful

ICBF Gene Ireland young bull listings were used to shortlist bulls of interest. Following visual inspection and updated genomic €uro-Stars the final selections were made. The three bulls selected are now being made available to farmers this Spring to use on their herds to produce the next generation of Hereford cross cattle suitable for the premium markets supplied by Irish Hereford Prime. The 3 high figured bulls selected for 2022 are 'Skehanore Fruitful' (HE7545), 'Timolinpoll 1 Hercules' (HE7374) and 'Corlismore Cormac' (HE7548).



'Carhuefree Prince' (CRP):  
Maternal Grandsire of  
'Skehanore Fruitful'.



## Eurogene & Gene Ireland

'Ampertaine Ifor' (LM4063) is a Limousin bull that was progeny tested through Gene Ireland by Eurogene AI (left). One of his test progeny in Tully (right).





## 'Commercial Beef Value (CBV)

This is a new selection index for non-breeding animals. Basically it's an animal's Terminal Index with the calving traits left out.

Why was it brought in?

An animal's Euro-Star index values for Replacement, Terminal and Dairy Beef are an estimate of how strong or weak that animal's offspring will be for those traits. However, take a bullock as an example. His terminal index would include calving traits. If his sire was a hard calving bull then he would be penalized in his terminal index because of these high calving figures. However this is irrelevant as he will never get the chance to sire offspring and pass on such hard calving genes.

So the 'CBV' allows such non-breeding animals to have an index figure with just the traits of importance that are relevant to them included i.e docility, feed intake and carcass traits. It will only be available on animals destined for finishing and will not be available on breeding males or females. It's main port of call will be on mart boards. It will also be available on Herdplus profiles.



## Interbeef - Czech Mate



Interbeef is an Organisation where many European cattle breeding countries work together to share evaluations and genotypes with each other.

A goal of this collaborative work is the creation of international beef evaluations allowing beef bulls from different countries to be compared against each other. To this end ICBF is progeny testing foreign AI bulls through Gene Ireland at the same time that they are tested in their home countries.

One such bull called 'Epik Agrochyt P' from the Czech Republic is being included by ICBF in the 2022 Gene Ireland progeny test program. He was born in one of the most successful herds in the Czech Republic – Agrochyt s.r.o., Mohelno. He stands at the 'Natural' Spol s.r.o AI stud in the Czech Republic.

He is a very interesting bull for creating linkages between Ireland and the Czech Republic for Interbeef evaluations. He is sired by the Dovea Genetics bull 'Curaheen Gunshot P' and is out of a 'Raceview Van Halen' cow that was bred in the Czech Republic. 'Van Halen' also stood in Dovea. The Czech AI Company considers him to have medium frame with excellent muscularity. On performance test he had a daily gain of 1.5kg/day and weighed 603kgs at a year old.'

'Epik Agrochyt P' (SI8121): His parent average and genomic data combine to give him a very high 5 star replacement index of €155 (46%). He is the highest indexed young bull in the 2022 Gene Ireland Suckler program.



## 'Agri-Lloyd's 'Sire Sense'

[www.Agrilloyd.ie](http://www.Agrilloyd.ie)>Siresense

Agri-Lloyd have partnered with 'KI Kampen' of the Netherlands to put together an outstanding selection of dairy bulls. This new venture is called 'Sire Sense' and is headed up by breeding advisors John Molloy and Conor O'Halloran. Their current standout bulls are 'De Volmer Dropshot RF' (FR6109) with an EBI of €210 and the number one pure Friesian bull in Holland 'Dalino' (FR6112) with an EBI of €183.



A 'Dropshot' calf in Wexford.



Some of Sire Sense team at the Hardenberg show in front of 'Dropshot' daughters in Holland.

## 'Bova AI

[www.Bova-ai.com](http://www.Bova-ai.com)



'DG RH Alphaman Red (FR2092) improved his performance in the latest index run (EBI:€196). This Aikman son continues his rise in the milk charts with positive components. His daughters are not particularly large but offer huge chest width and deep ribs. The udders are well attached and another positive trait are the longer teats. He also scores exceptionally well for somatic cell count (109), fertility (104) and he is also a calving ease bull.

'DG RH Alphaman Red's maternal sister "Awesome Avea-Red" the BTS-Avea VG89 daughter was awarded the Reserve Junior Champion Red & White heifer at Beveren show. She was bred by Bart Staels, Belgium.



'Loyal (LM4184) daughter "Peggy" pictured at 2 years old, bred by Alexander Demarty, Lubersac, France. She was awarded 1st prize in the beefy breeding heifer class at the French National show in Limoges in September 2021.



'Laurel (LM4185) son "Lazio" bred by Michael Klemm, Germany, was awarded 1st in his class at the German National Limousin Show in 2021.

## Bullbank



'Clenagh Lyle' son 'Burradon Rhinestone' sold for 17,000 Guineas in Stirling Bull Sales Feb '22. Bred by Chris Curry, Northumberland, England.

[www.bullbank.ie](http://www.bullbank.ie)



Another 'Clenagh Lyle' son 'Burradon Olaf' sold for 10,000 Guineas in Stirling Bull Sales February 2020.



Clenagh Lyle (CH4634)

Commercial calves off Jackpot sold for between 3,000-6,000 Guineas at the Inland Pastures Dispersal Sale in Carlisle, June '21. Calves off Blue X and Lim x Blue heifers.



Ampertaine Jackpot (LM8031)



Carrickmore Maximus (S3706)



'Goldies Rolo' by BullBank's 'Carrickmore Maximus' first prize winner sold for 12,000 Guineas in Carlisle. Super stylish, correct bull with great plates and spring of rib.



Reserve Overall Champion at Balmoral Show '21 was 'Carrickmore Maximus' daughter 'Tweeddale Redhot', an April 2020 born heifer, exhibited by Trevor Shields, Glenmarshal herd, Newry, Co Down.

## Celtic Sires

[www.celticsires.ie](http://www.celticsires.ie)

"Fleckvieh semen sales have been growing at a phenomenal rate in the last couple of years. 'Celtic Fleckvieh Ireland' supplies all of the Austrian Fleckvieh bulls, and normally keep a stock of about a dozen bulls in our Semen Store in Ireland. We specialize in Fleckvieh - we've milked them on our own farm and study the bloodlines very carefully to pick only the most suitable bulls for Irish conditions.

Only 2% of our sales are sexed semen, as the value of the bull calf is so high, most farmers prefer to have the higher fertility that always comes with conventional semen." Ger Brickley, Celtic Sires



"GS Hierher" is a young Fleckvieh Sire available from Celtic Sires with an EBI of €142.

## Dovea Genetics

[www.doveagenetics.ie](http://www.doveagenetics.ie)



'Bunlahy John G (BJG)



Kealkil Prime Lad (AA4743)



Lavally Prince (AA4923)

Dovea has been supplying high quality beef genetics to Spain for use both on purebred maternal lines and on Dairy females. The Spanish distributor 'Inatega' handles the semen.

"In recent years, the Spanish market has seen an increase in demand for quality beef bulls with good health, gestation & calving traits. Angus use has grown hugely due to its high fertility, calving ease and carcass yield. Limousin & Belgian blue have also grown significantly.

Spanish farmers appreciate Dovea bulls for their high fertility, performance and calving ease without affecting cow health. 'Bunlahy John G', 'Keirsbeath Karma', 'Kealkil Prime Lad' and 'Lavally Prince' have been extensively used in Spain and are proof of this." Inatega, Spain.

## Dunmasc

[www.dunmascgenetics.ie](http://www.dunmascgenetics.ie)



"The demand for Irish bulls is very high in many different countries. Each market has its own requirements. However, easy calving, muscle and conformation are important traits that are looked for in our beef bulls. Popular bulls at the moment are Clenagh Picasso ET (CH7473) (photo left) and Bracken Ruben (LM7641)." Stephen Dowling, Dunmasc Genetics.

Irish Beef Genetics are also to the fore at the 'Dogagen' AI Company in Turkey where up to 15 Irish bred beef bulls feature in their latest AI Catalogue across 4 beef breeds (via Dunmasc Genetics).



'Oghamstone Noah' (Pirate x CF52) stands in Turkey.

## Eurogene

[www.eurogeneaiservices.com](http://www.eurogeneaiservices.com)



"Possextown Faithful' daughters in the UK.

"The Eurogene bull "Possextown Faithful" has been an incredibly popular sire in the UK amongst both spring and autumn block calving systems, his exceptionally balanced profile of high milk solids coupled with adding width and strength to their cows has made him an attractive option to many breeders. He was the biggest selling bull in our grazing portfolio in both 2020 and 2021". William Astley (Cogent Breeding).

He was bred by Gordon Foster, Possextown, Enfield, Co.Meath. He was progeny tested through ICBF's 'Gene Ireland' progeny test program in 2016 where 762 of his straws were distributed amongst the participating test herds.

## NCBC

[www.munsterbovine.ie](http://www.munsterbovine.ie)[www.progressivegenetics.ie](http://www.progressivegenetics.ie)

NCBC operates under 'Ireland Genetics' Internationally - promoting Irish genetics around the world. Pictured opposite are a group of 200, 13 month old Irish heifers sired by 'Nextgen Eimer' (FR2460) & 'Nextgen Candy' (FR2385).



An 'Elite Ice Cream' (LM2206) sired commercial heifer at Clogher Valley Livestock Producers first Christmas Beef show and sale in Northern Ireland. She weighed 500kgs at 11 months old and sold for a record £5050.

## WWS Ireland

[www.wwsireland.com](http://www.wwsireland.com)

Worldwide Sires Ireland bull 'Peak Motion ET' (FR5076) is the number 1 'Daughter Proven International' bull on the ICBF Spring 2022 Dairy Active Bull List.

With a very impressive EBI of €305 (70%), he has 304 daughters in 21 herds in the USA. Milk Sub Index: €120. Health Sub-Index: €29.

He is +440kgs of milk, 0.05 for Protein % and is a 'Low' risk for 'dairy heifer calving difficulty'.





### EBI - Dairy Active Bull List

(23/03/22)

Animal Details							EBI			Semen Details		
Rank	Code	Bull Name	Breed	Status	HO %	GI	Index	Rel(%)	Proof	Avail	Price	Supplier
1	FR7143	(IG)TISAXON TROOPER	HO	PED	81	Yes	€368	57	GS	Medium	20	NCBC
2	FR6547	(IG)STAMULLEN LUNASA SRM	HO	SRM	69	Yes	€366	54	GS	Medium	20	NCBC
3	FR6481	BROWNEY BARNA SRM	HO	SRM	69	Yes	€359	57	GS	High	22	Dovea
4	FR6439	(IG)OAKFARM BEHINS ZEUS	HO	PED	78	Yes	€358	56	GS	Medium	20	NCBC
5	FR7047	(IG)BAURAVILLA PISTOL SRM	HO	SRM	75	Yes	€356	56	GS	Low	20	NCBC
6	FR6960	(IG)BALLINROE XAAR	HO	PED	63	Yes	€354	56	GS	Medium	20	NCBC
7	FR6484	RIVERSIDE PIVOTAL 874 SRM	HO	SRM	78	Yes	€354	57	GS	High	22	Dovea
8	FR6649	(IG)KILFEACLE DANZIG	HO	PED	84	Yes	€352	57	GS	Medium	20	NCBC
9	FR7020	(IG)TOWNROCHE TURBO	HO	PED	72	Yes	€350	61	GS	Medium	20	NCBC
10	FR6520	TOUREEN TUAIRIN TIM	HO	PED	88	Yes	€345	57	GS	High	19	Dovea
11	FR6778	(IG)KILBALLY SUGARHILL SRM	HO	SRM	75	Yes	€343	57	GS	Medium	20	NCBC
12	FR7167	IG MUINEMOR HUBER	HO	XSR	56	Yes	€342	56	GS	Medium	20	NCBC
13	FR6469	TINNAKILL NAVIGATOR	HO	PED	75	Yes	€340	61	GS	High	19	Dovea
14	JE5986	MONEEN RIO	JE	XSR	19	Yes	€333	64	GS	High	14	Bova AI
15	FR6981	ROCHEMOUNT LAD	HO	PED	81	Yes	€330	58	GS	High	21	Eurogene/LIC
16	FR6499	BALLYDUNNE OLAF	HO	PED	78	Yes	€330	62	GS	High	19	Dovea
17	FR6622	BAWNGARRA BRÓD	HO	PED	78	Yes	€329	61	GS	High	19	Dovea
18	FR6772	(IG)BALLYCARNEY DENMAN	HO	PED	88	Yes	€328	56	GS	Medium	20	NCBC
19	FR6984	SANTRY LION KING	HO	PED	84	Yes	€328	56	GS	High	21	Eurogene/LIC
20	FR6625	DOLLSTURN JIMBOB SRM	HO	SRM	66	Yes	€327	59	GS	High	19	Dovea
21	FR6951	WATERPARK HECTOR	HO	PED	72	No	€327	55	GS	High	14	Bova AI
22	FR7365	(IG)GLOSS JONO	HO	PED	84	No	€326	55	GS	Low	20	NCBC
23	FR6844	(IG)HILLTOWN FABLE SRM	HO	SRM	81	Yes	€325	59	GS	Medium	20	NCBC
24	FR7014	(IG)DEANS GROVE SADIO SRM	HO	SRM	88	Yes	€325	57	GS	Medium	20	NCBC
25	FR6718	GARRENDENNY LEWIS SRM	HO	SRM	72	Yes	€324	60	GS	High	19	Dovea
26	FR6217	PINE-TREE LAWSON LARRY-ET	HO	PED	100	No	€322	54	GS	High	24	Eurogene/LIC
27	FR7110	(IG)PARKDUV OSORNO	HO	PED	81	Yes	€322	56	GS	Low	20	NCBC
28	FR6028	BRACKHERD PANAMA SRM	HO	SRM	59	No	€321	65	GS	High	14	Bova AI
29	FR6472	ARDALLEN FERGUS	HO	PED	78	Yes	€321	62	GS	High	19	Dovea
30	FR6475	GORTCREEN VAN DIJK	HO	PED	81	Yes	€321	61	GS	High	19	Dovea
31	JE6694	ROOVESBRIDGE COPENHAGEN	HO	XSR	41	Yes	€320	54	GS	High	14	Bova AI
32	FR6853	(IG)KNOCKENRIGHT CHESSMAN	HO	PED	81	Yes	€320	60	GS	Medium	20	NCBC
33	FR6517	(IG)SMALLACRE ZANZA SRM	HO	SRM	75	Yes	€320	61	GS	High	19	NCBC
34	FR7116	(IG)MUNTA JACOB SRM	HO	SRM	81	Yes	€319	56	GS	Medium	20	NCBC
35	FR7302	(IG)SKEHANAGH DEANO	HO	PED	88	No	€318	56	GS	Low	20	NCBC
36	FR7026	(IG)RICHVALE GRAJO	HO	PED	75	Yes	€318	61	GS	Medium	20	NCBC
37	FR6987	SHANDANGAN REX	HO	PED	91	Yes	€318	55	GS	High	21	Eurogene/LIC
38	FR5860	SAINT BRIGID FRANK JOSEPH	HO	PED	75	No	€315	64	GS	High	22	Dovea
39	FR6966	HANRAHAN MAGNIFICO	HO	PED	88	Yes	€314	56	GS	High	21	Eurogene/LIC
40	FR7017	(IG)SEAFORT EAGLE	HO	PED	81	Yes	€313	62	GS	Medium	20	NCBC
41	FR6814	(IG)BEDFORDHILL CONOR SRM	HO	SRM	81	Yes	€312	61	GS	Medium	20	NCBC
42	FR7140	(IG)LOCHINVER JODY SRM	HO	SRM	78	Yes	€312	56	GS	Medium	20	NCBC
43	FR7152	(IG)LACKCASTLE BARTON	HO	PED	84	Yes	€312	56	GS	Medium	20	NCBC
44	FR7023	(IG)COOLNASOON DAWN	HO	PED	78	Yes	€312	61	GS	Medium	20	NCBC
45	FR6523	BROWNEY LISNA	HO	PED	75	Yes	€311	62	GS	High	19	Dovea
46	FR7359	(IG)MOORABBY NAVAJO	HO	PED	81	No	€310	60	GS	Low	20	NCBC
47	FR7170	IG COOLNASOON ALAMO	HO	XSR	63	Yes	€307	55	GS	Medium	20	NCBC
48	FR6643	(IG)COOLBEHA BATTASH	HO	PED	88	Yes	€307	56	GS	Medium	20	NCBC
49	FR7071	TULLERSTOWN PODGE	HO	PED	88	No	€307	56	GS	High	19	Dovea
50	FR7011	(IG)COMMEEN PHIL SRM	HO	SRM	75	Yes	€306	61	GS	Medium	20	NCBC

#### EBI Index

Trait	Weighting	The Economic Breeding Index (EBI) is a single figure profit index aimed at helping dairy farmers identify the most profitable bulls and cows for breeding dairy herd replacements.
Milk	33%	
Fertility	33%	
Calving	10%	
Beef	8%	
Maintenance	8%	
Management	4%	
Health	4%	



The number 1 bull on EBI is '(IG) Tisaxon Trooper'. Sired by 'Pivotal', he is out of a 'KOZ' dam. He went through 'Gene Ireland'. Pictured opposite is a 'KOZ' daughter.

HerdPlus		DBI - Dairy Beef Active Bull List							
Profit through Science		(23/03/22)							
Animal Details					Dairy Beef		Semen Details		
Rank	Code	Bull Name	Brd	GI	Index	Rel%	Supplier	Avail	Price
1	AU4460	DAUPHIN	AU	No	€147	85	Dovea	High	12
2	LM2014	EWDENVALE IVOR	LM	Yes	€143	97	Dovea	High	10
3	DPZ	DESPAGNOU	AU	No	€139	86	Bova AI	Medium	10
4	SA2189	ULSAN	SA	No	€135	88	Dovea	High	10
5	SA4604	KNOTTOWN ROY	SA	Yes	€133	88	NCBC	High	12
6	AU4627	MADISON	AU	No	€130	80	Dovea	High	12
7	AZL	ROSS ALO (ET)	BB	No	€130	89	NCBC	Low	10
8	LM5443	BROOKLANDS MARCO	LM	No	€128	72	Dovea	High	10
9	BB4329	KILMAINHAM KEN	BB	No	€127	71	Dovea	High	10
10	SFL	DU STORDEUR FLANEUR	BB	No	€126	93	Bova AI	Low	50
11	AU4683	TURLOUGHMORE MAGNIFICENT	AU	Yes	€124	91	NCBC	Medium	12
12	AA4818	GABRIEL PETE 2074	AA	Yes	€123	88	Eurogene/LIC	High	11
13	LM5413	CLARAGH NEYMAR	LM	Yes	€120	69	Eurogene/LIC	High	15
14	AU2470	CESAR	AU	No	€117	85	Eurogene/LIC	High	14
15	AA4743	KEALKIL PRIME LAD	AA	No	€116	88	Dovea	High	10
16	BB4085	NORTON JAGUAR	BB	No	€115	92	Dovea	High	10
17	AA4089	INTELAGRI MATTEO E.T. (ET)	AA	Yes	€111	97	NCBC	High	10
18	AU5262	BISON	AU	No	€111	88	Dovea	High	10
19	EBY	ELDERBERRY GALAHAD	LM	No	€111	97	Dovea	High	10
20	DFD	CELESTIN DU FOND DE BOIS	BB	No	€110	93	Dovea	High	10
21	AA4088	INTELAGRI MAVERICK E.T. (ET)	AA	No	€108	96	NCBC	High	10
22	AA4639	HWADONNIS T243	AA	Yes	€108	89	NCBC	Medium	16
23	AA4752	DALRIADA RED PERFECTION	AA	No	€108	78	Bova AI	High	8
24	BHU	BALLYMACKEOGH HUGH	SA	Yes	€107	91	Dovea	High	10
25	THZ	TOWTHORPE DUBAI	LM	No	€107	87	Bova AI	High	10
26	AA4631	GABRIEL PAT 1949	AA	No	€102	91	NCBC	High	12
27	DMM	DAMONA	LM	No	€102	91	Eurogene/LIC	High	12
28	ZEP	HAWKLEY RED ZEPPELIN N659	AA	No	€102	93	Dovea	High	10
29	BB4055	SUAREZ D'OCHAIN	BB	No	€101	84	Dovea	High	10
30	ZAG	CASTLEVIEW GAZELLE	LM	Yes	€101	98	NCBC	High	16
31	BZC	BOHERARD CIAN (ET)	BB	No	€100	92	Bova AI	High	10
32	LM4217	MOONDHARRIG KNELL	LM	Yes	€100	95	NCBC	High	12
33	ZLL	LANIGAN RED DEEP CANYON ET	AA	No	€100	94	Bova AI	Low	30
34	LM4184	LOYAL	LM	No	€99	85	Bova AI	High	10
35	KYA	CORNAMUCKLA LORD HARDY K222	AA	No	€98	97	NCBC	High	14
36	WZG	WESTELLEN DIEGO M734	AA	No	€98	94	Bova AI	High	10
37	AA4235	GABRIEL MOSSY 1727	AA	No	€97	95	Eurogene/LIC	High	11
38	AA4303	LISDUFF RED PEPPER R368	AA	No	€97	88	Dovea	High	10
39	AU5508	WHITETOWN LEYLAND ET	AU	Yes	€97	79	Eurogene/LIC	High	11
40	BZB	BOLIDE	PT	No	€97	91	Dovea	High	10
41	ZGM	GAMIN	LM	No	€96	91	Bova AI	High	10
42	AA6682	HW LORD HORATIO V538	AA	Yes	€95	58	NCBC	High	10
43	PZB	BONAPARTE	SA	Yes	€94	90	NCBC	High	10
44	AA4878	LAHEENS PIERRE	AA	Yes	€93	80	Eurogene/LIC	High	12
45	LM4169	FAIRWOOD LEXUS	LM	No	€93	84	Dovea	High	10
46	CH4321	LAPON	CH	Yes	€92	88	NCBC	High	12
47	BB2344	GREYSTONES GOVERNOR	BB	No	€89	87	NCBC	High	14
48	BB5226	MARIUS DES PRINCES DE LIGNE	BB	Yes	€89	74	NCBC	High	12
49	JSS	USSE	LM	No	€88	88	Eurogene/LIC	High	15
50	LM4007	TOMSCHOICE JET	LM	No	€88	90	Eurogene/LIC	High	12



'Dauphin' is the number 1 beef bull on 'DBI'.



'Gabriel Pete 2074' is the number 1 Angus bull on 'DBI'. He went through 'Gene Ireland' (Pic of his Sire: 'Gabriel Mossy 1727').



'Ewdenvale Ivor' is the number 1 Limousin bull on 'DBI'. He went through 'Gene Ireland'.



'Knottown Roy' is the number 1 Saler bull on 'DBI'. He also went through 'Gene Ireland'.

### Dairy Beef Index - DBI

Trait	Weighting	The Dairy Beef Index (DBI) is a tool to produce quality beef cattle from the dairy herd with short gestation & calving ease that will also grow and finish well.
Dairy Calving Difficulty	35%	
Carcass Weight	27%	
Gestation	13%	
Feed Intake	9%	
Out of Spec	8%	
Carcass Conformation	4%	
Carcass Fat	2%	
Calf Mortality	1%	
Docility	1%	



### Terminal - Beef Active Bull List

(23/03/22)

Animal Details					Terminal				Semen Details			
Rank	Code	Bull Name	Breed	GI	Index	Rel %	Stars Within	Stars Across	Avail	Price	Supplier	
1	LM4366	Gstaad	LM	No	€191	74	5	5	High	18	Eurogene	
2	PT2165	Gainsbarre	PT	No	€191	63	5	5	High	12	Dovea	
3	BB5815	Kilcombe Locky Et	BB	No	€189	55	5	5	High	10	Dovea	
4	RGG	Giga Du Bois Remont	BB	No	€188	90	5	5	High	10	Dovea	
5	CH6298	Hamel	CH	No	€188	57	5	5	High	38	NCBC	
6	LM6529	Claddagh Mccabe (Et)	LM	No	€180	52	5	5	High	12	Dovea	
7	CH5446	Goldstar Othello	CH	No	€178	60	5	5	Low	30	KGEBULLS	
8	LM4407	Tweeddale Lennox	LM	No	€174	64	5	5	Low	18	NCBC	
9	LM5154	Ampertaine Majestic	LM	No	€174	61	5	5	Medium	65	WWSBULLS	
10	HJD	Hideal	CH	No	€173	90	5	5	High	12	Bova	
11	CH6271	Whitecliffe Orwell	CH	No	€172	55	5	5	Medium	12	Eurogene	
12	LM4330	Meelickaduff Lamborghini	LM	No	€172	76	5	5	High	10	Dunmasc	
13	LM7404	Gaggin Power Et	LM	Yes	€169	55	5	5	High	12	Eurogene	
14	LM5413	Claragh Neymar	LM	Yes	€168	61	5	5	High	15	Eurogene	
15	CPW	Carillon Du Pont De Messe	BB	No	€165	90	5	5	Low	12	Bova	
16	OHB	Boherard Hurricane Et	BB	No	€165	88	5	5	High	10	Dovea	
17	BB2146	Maillon De Waleffes	BB	No	€165	73	5	5	High	15	Dovea	
18	LM4471	Tomschoice Lexicon	LM	No	€164	72	5	5	Medium	20	WWSBULLS	
19	CH4159	Knockmoyle10 Loki Et	CH	No	€164	93	5	5	High	10	Dovea	
20	KZG	Kilmore Gie	BB	No	€164	77	5	5	High	17	Dunmasc	
21	CH2216	First	CH	No	€164	85	5	5	Medium	38	NCBC	
22	LM4377	Whiskey Infinity	LM	No	€163	55	5	5	Medium	12	BULLBANK	
23	AZL	Ross Alo (Et)	BB	No	€162	93	4	5	Low	10	NCBC	
24	LM5641	Jt	LM	No	€161	61	5	5	High	24	NCBC	
25	BB6883	Tullamoylan Max	BB	Yes	€161	50	4	5	Low	10	NCBC	
26	CH4436	Derryolam Matt	CH	No	€160	86	5	5	High	12	Eurogene	
27	SXU	Sumo	CH	No	€158	72	5	5	High	14	NCBC	
28	LM2014	Ewdnevale Ivor	LM	Yes	€158	96	5	5	High	10	Dovea	
29	CH2215	Artois	CH	No	€157	81	5	5	Medium	38	NCBC	
30	LM5611	Tomschoice Nation	LM	No	€156	53	5	5	Medium	18	NCBC	
31	FSZ	Fiston	CH	Yes	€156	96	5	5	High	18	NCBC	
32	BB4329	Kilmainham Ken	BB	No	€156	65	4	5	High	10	Dovea	
33	CH2173	Imposant	CH	No	€156	68	5	5	High	18	Dovea	
34	LM4365	Frascati	LM	No	€155	62	5	5	High	26	Eurogene	
35	LM5443	Brooklands Marco	LM	No	€155	67	5	5	High	10	Dovea	
36	SNZ	Sylvaner	CH	No	€154	81	5	5	High	38	NCBC	
37	CH6130	Epemay	CH	No	€154	59	5	5	High	38	NCBC	
38	BB4494	Bricolage De Beaufaux	BB	No	€153	61	4	5	High	10	Dovea	
39	BB4493	Newpole Lancelot Et	BB	No	€152	53	4	5	High	16	NCBC	
40	CH4321	Lapon	CH	Yes	€152	92	5	5	High	12	NCBC	
41	BB4295	Alphabet De Beaufaux	BB	No	€151	64	3	5	High	12	Eurogene	
42	BB4621	King Ten Dreve	BB	No	€151	64	3	5	High	8	Bova	
43	CH2218	Bivouac	CH	No	€150	92	5	5	High	10	Dovea	
44	CH4723	Oghamstone Noah	CH	No	€150	59	5	5	High	10	Dunmasc	
45	AU6286	Johnstown Nelson 1039	AU	No	€149	51	5	5	High	10	Dovea	
46	BB4737	Nayakou Du Bois Remont	BB	No	€149	54	3	5	High	18	Dovea	
47	LM5037	Elite Lacette Et	LM	No	€148	65	5	5	High	16	Eurogene	
48	BA4283	Faust	BA	No	€148	55	5	5	High	28	NCBC	
49	BA4352	Silverwood Mark	BA	No	€148	65	5	5	High	10	Bova	
50	AFF	Attribut Du Fond De Bois	BB	No	€148	87	3	5	Medium	15	NCBC	



'Gainsbarre' is the number 1 Parthenaise bull on 'Terminal Index'.



'Kilcombe Locky ET' is the number 1 Belgian Blue bull on 'Terminal Index'.



'Hamel' is the number 1 Charolais bull on 'Terminal Index'.



'Gstaad' is the number 1 Beef bull on 'Terminal Index'.

#### Terminal Index

Trait	Weighting
Carcass Traits	56%
Calving	26%
Feed Intake	16%
Docility	2%

The Terminal index estimates how profitable a bull's progeny will be from birth to slaughter.

Animal Details		Replacement							Semen Details		
Rank	Code	Bull Name	Brd	GI	Index	Rel %	Stars Within	Stars Across	Avail	Price	Supplier
1	SA4059	Beguinn	SA	No	€274	86	5	5	Low	26	NCBC
2	SA4604	Knottown Roy	SA	Yes	€258	70	5	5	High	12	NCBC
3	SA2189	Ulsan	SA	No	€209	92	5	5	High	10	Dovea
4	AU4683	Turloughmore Magnificent	AU	Yes	€205	65	5	5	Medium	12	NCBC
5	SI2152	Curaheen Earp	SI	Yes	€199	96	5	5	High	14	NCBC
6	LM4471	Tomschoice Lexicon	LM	No	€198	58	5	5	Medium	20	VVWSBULLS
7	SI4950	Derreen Jack	SI	No	€196	54	5	5	High	10	Bova
8	SI4147	Curaheen Gunshot P	SI	No	€196	87	5	5	High	10	Dovea
9	AU5506	Whitestown Leyland Et	AU	Yes	€191	55	5	5	High	11	Eurogene
10	VTA	Vaillant	SA	No	€189	89	4	5	High	14	Bova
11	SI2469	Lisnacraun Fifty Cent	SI	Yes	€186	95	5	5	Medium	12	NCBC
12	AU4836	Turloughmore Majestic	AU	Yes	€185	56	5	5	High	11	Eurogene
13	AA4743	Kealkil Prime Lad	AA	No	€184	63	5	5	High	10	Dovea
14	LM2014	Ewdenvale Ivor	LM	Yes	€182	93	5	5	High	10	Dovea
15	SH4319	Hussar Of Upsall (P)	SH	No	€180	52	5	5	High	11	Eurogene
16	SI4657	Coose Jericho P	SI	No	€179	57	5	5	High	16	Eurogene
17	SA4461	Spiddal Pat	SA	Yes	€175	72	4	5	Medium	10	NCBC
18	AA4315	Lanigan Red Mikado	AA	No	€174	76	5	5	High	10	Bova
19	AA4752	Dalriada Red Perfection	AA	No	€170	58	5	5	High	8	Bova
20	JSS	Usse	LM	No	€169	83	5	5	High	15	Eurogene
21	AA4821	Deelish Panache	AA	Yes	€169	55	5	5	High	11	Eurogene
22	SI4947	Mount Jericho	SI	No	€168	51	5	5	High	10	Bova
23	LM4351	Grenache	LM	Yes	€168	70	5	5	Low	25	NCBC
24	SA4060	Baron	SA	No	€167	67	3	5	High	22	NCBC
25	ZLL	Lanigan Red Deep Canyon Et	AA	No	€167	96	5	5	Low	30	Bova
26	LM6172	Erebos	LM	Yes	€166	56	5	5	High	27	NCBC
27	HE4344	Allowdale Rambo 475	HE	Yes	€164	75	5	5	High	10	NCBC
28	CH2218	Bivouac	CH	No	€164	88	5	5	High	10	Dovea
29	SI4350	Rubjyen Here'S Johnny	SI	Yes	€164	67	5	5	High	10	NCBC
30	AA4632	Sallowglen Jamie T771	AA	No	€163	62	5	5	High	10	NCBC
31	AA5094	Fordel Lockdown P827	AA	No	€163	50	5	5	Medium	55	BULLBANK
32	LM7404	Gaggin Power Et	LM	Yes	€162	52	5	5	High	12	Eurogene
33	AJ4460	Dauphin	AU	No	€162	65	4	5	High	12	Dovea
34	ZHF	Hf Rebel 53y	AA	No	€161	81	5	5	Low	45	NCBC
35	SI4618	Omorga Isaac 17	SI	No	€160	57	5	5	High	11	Eurogene
36	LM4302	Dromaniq King	LM	No	€159	76	5	5	High	10	Dovea
37	PT2201	Aioli	PT	No	€159	76	5	5	Low	24	NCBC
38	HE4298	Fabb 1 Nutcracker	HE	No	€158	73	5	5	High	12	NCBC
39	PT2165	Gainsbarre	PT	No	€157	51	5	5	High	12	Dovea
40	LM4407	Tweeddale Lennox	LM	No	€157	50	5	5	Low	18	NCBC
41	WZG	Westellen Diego M734	AA	No	€155	91	5	5	High	10	Bova
42	AA4640	Hw Farghal T516	AA	Yes	€155	64	5	5	High	12	NCBC
43	SI4483	Rathlee Haribo	SI	No	€154	61	4	5	High	10	Bova
44	LM5443	Brooklands Marco	LM	No	€154	58	5	5	High	10	Dovea
45	TZL	Trezegoal	CH	No	€153	82	5	5	Medium	38	NCBC
46	CH4202	T ombapik	CH	No	€153	86	5	5	High	40	Dovea
47	QCD	Cloondroon Calling	SI	Yes	€152	95	4	5	High	10	Dovea
48	SI4083	Clonagh FrostyKing Et	SI	Yes	€152	89	4	5	Medium	12	NCBC
49	LM2321	Doudou.T.d	LM	No	€151	84	5	5	Low	20	NCBC
50	ZLA	Lataster Ivan	SA	Yes	€150	94	2	5	High	10	NCBC



'Turloughmore Magnificent' is the number 1 Aubrac bull on 'Replacement Index'. He went through 'Gene Ireland'.



'Allowdale Rambo 475' is the number 1 Hereford bull on 'Replacement Index'. He went through 'Gene Ireland'.

'Curaheen Earp (below)' is the number 1 Simmental bull on 'Replacement Index'. He also went through 'Gene Ireland'.

Replacement Index	
Trait	Weighting
Fertility	23%
Carcass Traits	21%
Milk	18%
Feed Intake	18%
Calving	16%
Docility	4%

The Replacement Index estimates how suitable daughters of a bull will be for being good low maintenance profitable suckler cows.



### ICBF Contacts

Area	Tel	Email	Web
ICBF	023-8820222	<a href="mailto:query@icbf.com">query@icbf.com</a>	<a href="http://www.icbf.com">www.icbf.com</a>
Herdplus	023-8820452	<a href="mailto:query@icbf.com">query@icbf.com</a>	<a href="http://www.icbf.com">www.icbf.com</a>
Gene Ireland Progeny Test Centre	045-521573	<a href="mailto:sconroy@icbf.com">sconroy@icbf.com</a>	<a href="http://www.icbf.com">www.icbf.com</a>

### AI Company Contacts

AI Company	Tel	Email	Web
Bova AI	061 - 351233	<a href="mailto:info@bova-ai.com">info@bova-ai.com</a>	<a href="http://www.bova-ai.com">www.bova-ai.com</a>
Bullbank	086-3227046	<a href="#">via website</a>	<a href="http://www.bullbank.ie">www.bullbank.ie</a>
Celtic Sires	086-8810719	<a href="mailto:info@celticsires.ie">info@celticsires.ie</a>	<a href="http://www.celticsires.ie">www.celticsires.ie</a>
Dovea Genetics	0504 - 21755	<a href="mailto:info@doveagenetics.ie">info@doveagenetics.ie</a>	<a href="http://www.doveagenetics.ie">www.doveagenetics.ie</a>
Dunmasc Genetics	086-3607641	<a href="mailto:info@dunmascgenetics.ie">info@dunmascgenetics.ie</a>	<a href="http://www.dunmascgenetics.ie">www.dunmascgenetics.ie</a>
Elite Pedigree Genetics	0044-7825950275	<a href="#">via website</a>	<a href="http://www.epgstraws.com">www.epgstraws.com</a>
Eurogene	052 - 7442940	<a href="mailto:sales@eurogeneaiservices.com">sales@eurogeneaiservices.com</a>	<a href="http://www.eurogeneaiservices.com">www.eurogeneaiservices.com</a>
K Genetics	086-2020734	<a href="#">via facebook</a>	<a href="https://facebook.com/kgeneticsAI/">facebook.com/kgeneticsAI/</a>
NCBC - Munster Bovine	1800 251 020	<a href="#">via website</a>	<a href="http://www.munsterbovine.ie">www.munsterbovine.ie</a>
NCBC - Progressive Genetics	0818 20 20 50	<a href="#">via website</a>	<a href="http://www.progressivegenetics.ie">www.progressivegenetics.ie</a>
Powerful Genetics	086-0743931	<a href="#">via facebook</a>	<a href="https://facebook.com/powerfulgenetics">facebook.com/powerfulgenetics</a>
Sire Sense Agri Lloyd	086-6071378	<a href="mailto:john@agrillloyd.ie">john@agrillloyd.ie</a>	<a href="http://www.agrillloyd.ie/siresense">www.agrillloyd.ie/siresense</a>
World Wide Sires Ireland	021-2349691	<a href="mailto:info@wvsireland.com">info@wvsireland.com</a>	<a href="http://www.wvsireland.com">www.wvsireland.com</a>

### Pedigree Breed Society Contacts

Breed	Tel	Email	Web
Aberdeen Angus	071-9632099	<a href="mailto:shane@irishaberdeenangus.com">shane@irishaberdeenangus.com</a>	<a href="http://www.irishaberdeenangus.com">www.irishaberdeenangus.com</a>
Irish Angus	071-9620406	<a href="mailto:office@irishangus.ie">office@irishangus.ie</a>	<a href="http://www.irishangus.ie">www.irishangus.ie</a>
Aubrac	051-641106	<a href="mailto:info@aubrac.ie">info@aubrac.ie</a>	<a href="https://facebook.com/IrishAubracSociety/">facebook.com/IrishAubracSociety/</a>
Belgian Blue	087-2023933	<a href="mailto:belgianblue@eircom.net">belgianblue@eircom.net</a>	<a href="http://www.ibbcs.com">www.ibbcs.com</a>
Blonde d'Aquitaine	089-4182260	<a href="mailto:irishblondes@gmail.com">irishblondes@gmail.com</a>	<a href="http://www.irishblonde.com">www.irishblonde.com</a>
Charolais	01-4198050	<a href="mailto:info@charolais.ie">info@charolais.ie</a>	<a href="http://www.charolais.ie">www.charolais.ie</a>
Hereford	044-9348855	<a href="mailto:irishhereford@gmail.com">irishhereford@gmail.com</a>	<a href="http://www.irishhereford.com">www.irishhereford.com</a>
Holstein	023-8833443	<a href="mailto:enquiries@ihfa.ie">enquiries@ihfa.ie</a>	<a href="http://www.ihfa.ie">www.ihfa.ie</a>
Limousin	025-85036	<a href="mailto:admin@irishlimousin.com">admin@irishlimousin.com</a>	<a href="http://www.irishlimousin.com">www.irishlimousin.com</a>
Montbeliarde	086-3367051	<a href="mailto:montbeliardeireland@gmail.com">montbeliardeireland@gmail.com</a>	<a href="https://facebook.com/montbeliardesociety">facebook.com/montbeliardesociety</a>
Parthenaise	087-2525100	<a href="mailto:secretary@parthenaise.ie">secretary@parthenaise.ie</a>	<a href="http://www.parthenaise.ie">www.parthenaise.ie</a>
Piedmontese	087-6381199	<a href="mailto:piemcattleadmin@gmail.com">piemcattleadmin@gmail.com</a>	<a href="http://www.irishpiemontesesociety.com">www.irishpiemontesesociety.com</a>
Saler	0505-42245	<a href="mailto:irishsalers@eircom.net">irishsalers@eircom.net</a>	<a href="http://www.irishsalers.com">www.irishsalers.com</a>
Shorthorn	086-0461442	<a href="mailto:info@irishshorthorn.com">info@irishshorthorn.com</a>	<a href="http://www.irishshorthorns.com">www.irishshorthorns.com</a>
Simmental	057-9324577	<a href="mailto:info@irishsimmental.com">info@irishsimmental.com</a>	<a href="http://www.irishsimmental.com">www.irishsimmental.com</a>



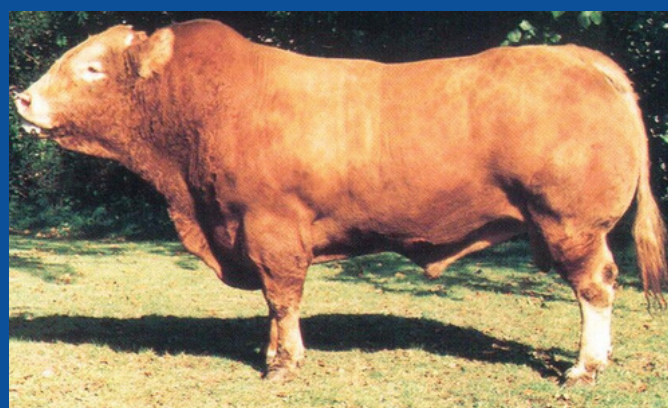
'PBO' - Proud Boy of Dunlever



'ECO' - Echo



'BAX' - BP Masterpiece 83X



'PAN' - Pelletstown Alan



'DEK' - Deerpark Leader



'AS56' - Herkules



## Stockbull Finder



### Bulls

- Genotyped
- Weight recorded by ICBF
- Assessed for muscle, size, feet & legs and docility
- Most up-to-date Euro-Star figures displayed

### Breeders

- Voluntarily signed up to the ICBF weight recording program (WHPR)
- Have their whole pedigree herd weight recorded & assessed by ICBF annually
- Are 'Spot Checked' by ICBF to verify data accuracy.
- Bull Photos, comments & Breeder contact details displayed



Go to

[www.icbf.com](http://www.icbf.com)

and click on

**'Stockbull Finder'**

All breeds & counties covered.

*The 'Stockbull Finder' is the only search engine for young Stockbulls in Ireland where all of the bulls have been independently weighed by ICBF.*



facebook

# Our Why & How

**We exist to benefit our farmers, our agri-food industry and our wider communities**

**We do this by**

- Developing and applying science and technology
- to ensure our farmers and our industry make the most profitable and sustainable decisions

## Our Farmer & Government Representation



## Our AI & Milk Recording Organisations



## Our Herdbooks



## icbf Acknowledging Our Members

*Thank you*

*Thank you for taking the time to read this newsletter. We hope you enjoyed it. If you have any queries, comments or topics you would like to see covered in future newsletters, please let us know at [icbfgenetics@icbf.com](mailto:icbfgenetics@icbf.com).*

Disclaimer: While the utmost care has been taken by ICBF to ensure all information is correct at the time of print, ICBF are not responsible for any errors or omissions which may have occurred.